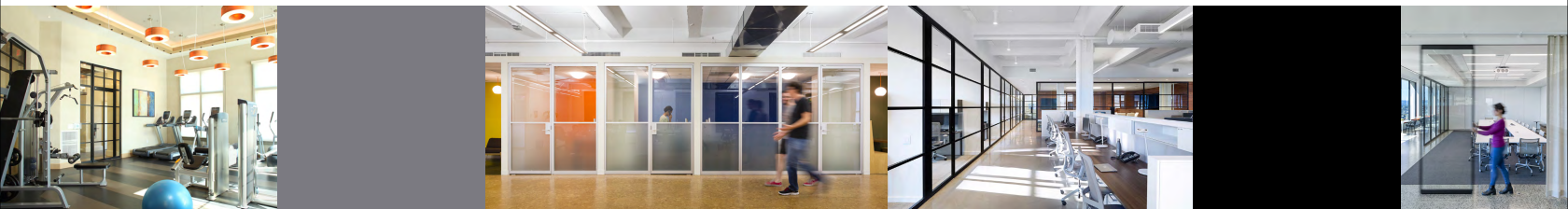


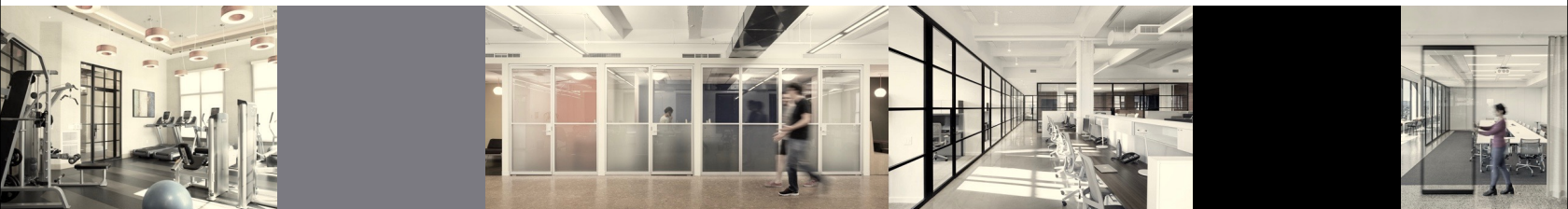
PK-30 system®



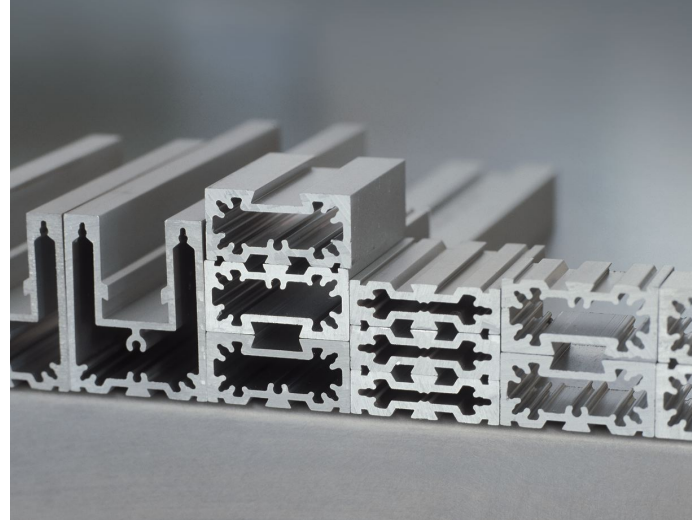
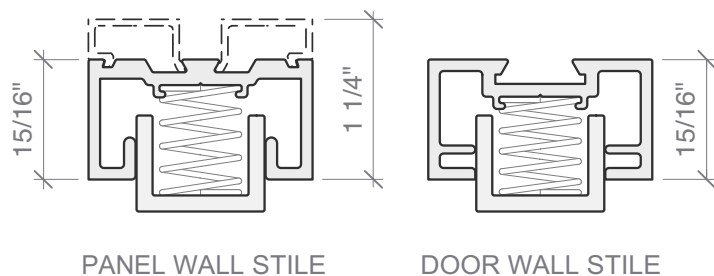
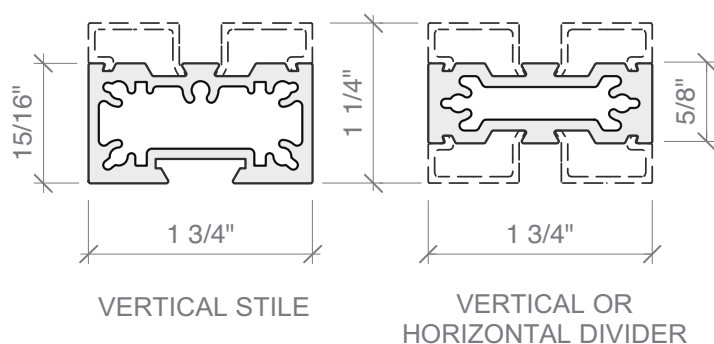
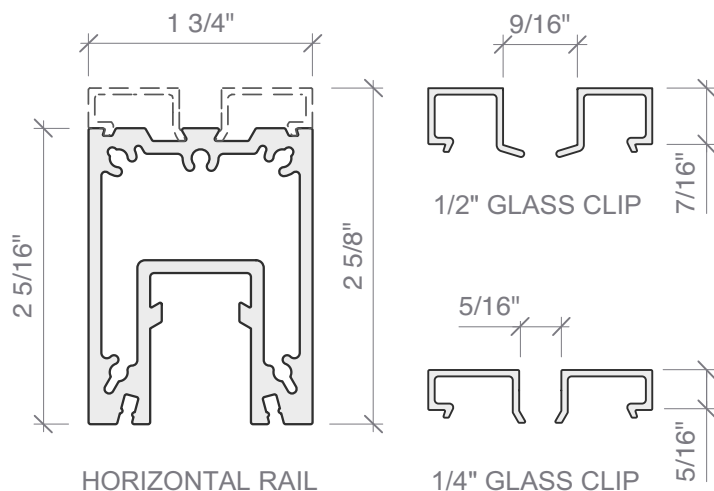
CONTENTS

| | |
|----|---------------------|
| 1 | COMPONENT PARTS |
| 2 | SLIDING DOORS |
| 3 | PIVOT DOORS |
| 4 | WOOD DOORS |
| 5 | FIXED PANELS |
| 6 | OPERABLE PARTITIONS |
| 7 | HARDWARE |
| 8 | LEED |
| 9 | CONTACT INFORMATION |
| 10 | PROJECT PHOTOS |

PK-30 system® 

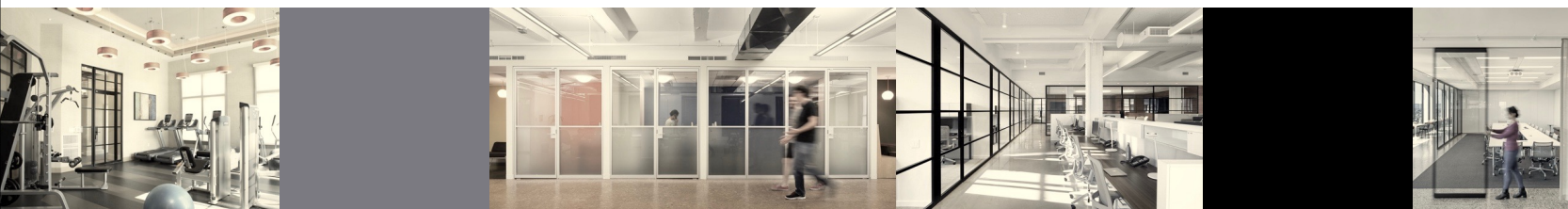


212.473.8050
www.pk30.com



All aluminum components are designed by PK-30 System and are extruded from high grade 6000 series aluminum alloy with 62% recycled content, allowing narrow profiles that are rigid and lightweight. The standard finishes are clear or black satin anodized. Custom colors are available per special order. The system accepts any 1/4", 3/8" or 1/2" thick panel material allowing unlimited design choices. All panels are cushioned by our proprietary clear silicone gasket and held securely in place by snap-in stops, enabling complete installation before glazing, as well as simplifying any repair or replacement.

PK-30 system®



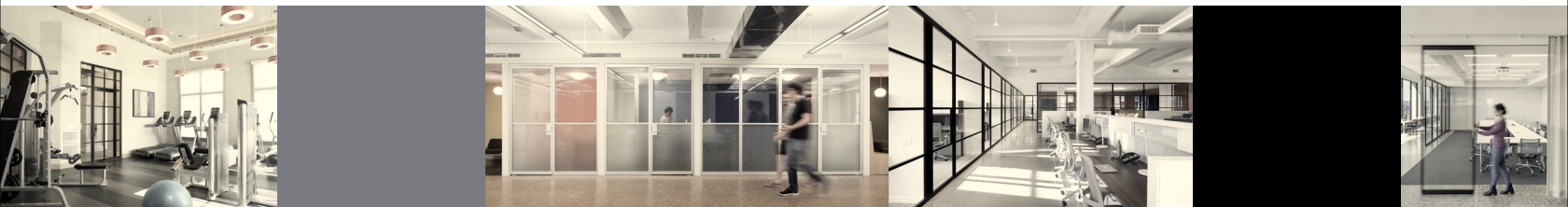
212.473.8050
www.pk30.com

1.1



PK-30 System sliding hardware fittings offer precision, safety and reliability and are proven in service for more than three decades. Whether you want to slide, fold or stack, PK-30 System offers innovative, efficient solutions for doors weighing up to 550lbs. FSB sliding door locks are standard, the sliding pocket door lock has an integral edge pull. They are available in a variety of keyed and non-keyed functions and FSB locks may be specified with standard North American cylinders allowing you to match building standard keyways. Additional proprietary hardware solutions include flush pulls, edge pulls and flush bolts. Sliding doors up to 10' in width and up to 12' in height are standard.

PK-30 system®



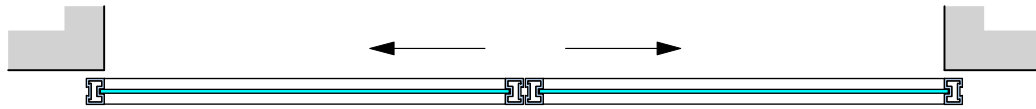
212.473.8050
www.pk30.com

2.1

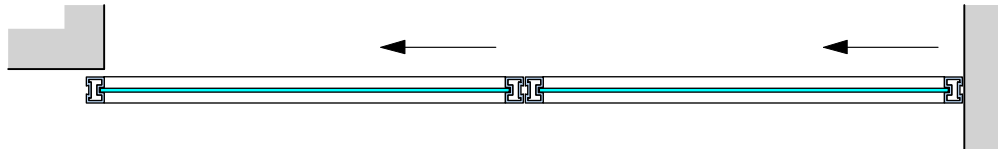
SLIDING DOORS



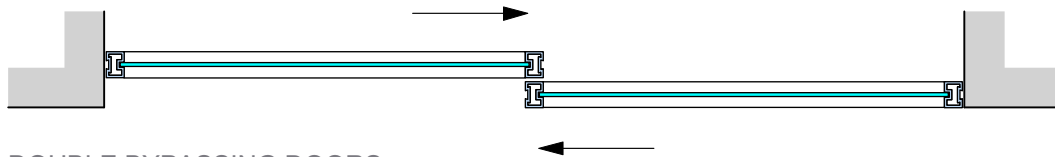
SINGLE SLIDING DOOR



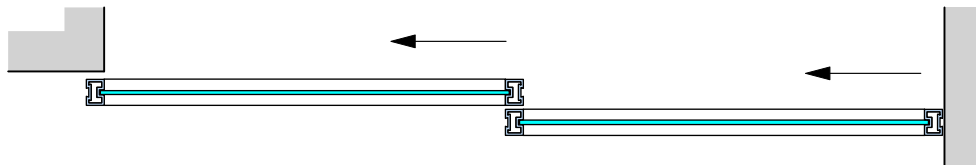
DOUBLE BI-PARTING COPLANER DOORS



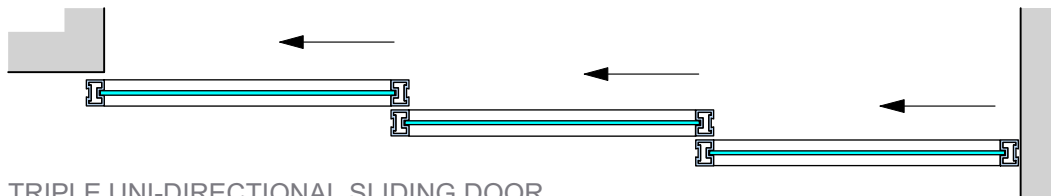
DOUBLE UNI-DIRECTIONAL COPLANER DOORS



DOUBLE BYPASSING DOORS



DOUBLE UNI-DIRECTIONAL SLIDING DOOR
WITH FOLLOWER MECHANISM



TRIPLE UNI-DIRECTIONAL SLIDING DOOR
WITH FOLLOWER MECHANISMS

BASIC SLIDING DOOR PLAN
CONFIGURATIONS

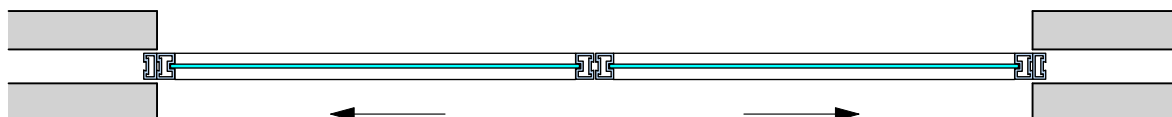
2.2

PK-30 system®

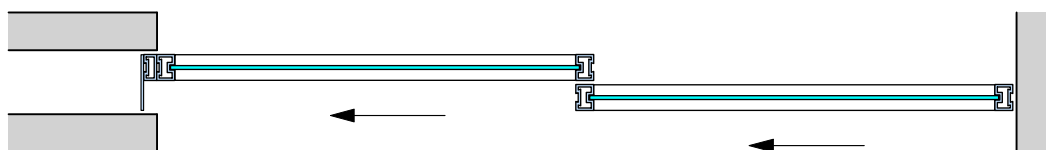
SLIDING DOORS



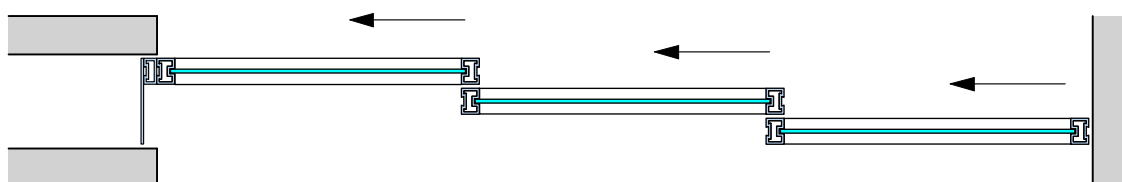
SINGLE POCKET DOOR



DOUBLE BI-PARTING POCKET DOOR



DOUBLE POCKET DOOR WITH FOLLOWER MECHANISM
& POCKET CLOSURE STRIP



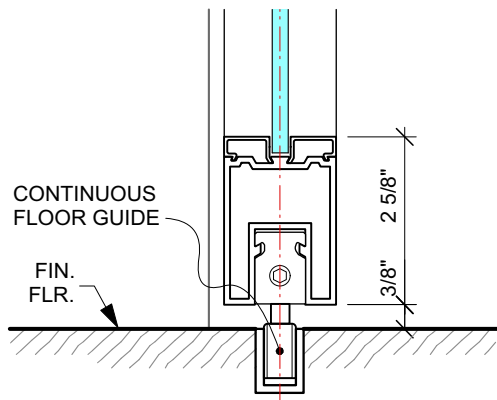
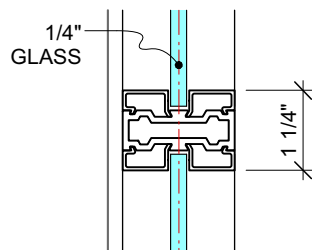
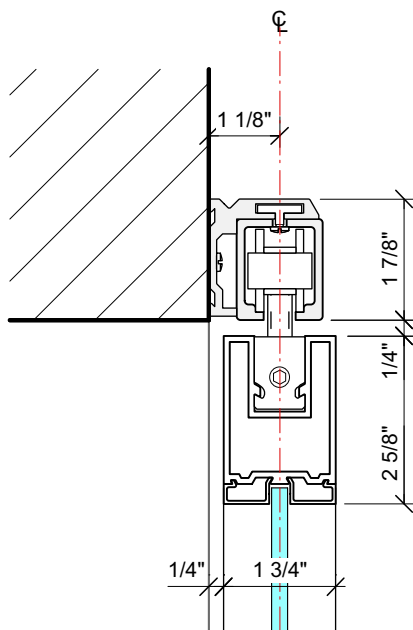
TRIPLE POCKET DOOR WITH FOLLOWER MECHANISMS
& POCKET CLOSURE STRIP

BASIC POCKET DOOR PLAN
CONFIGURATIONS

2.3

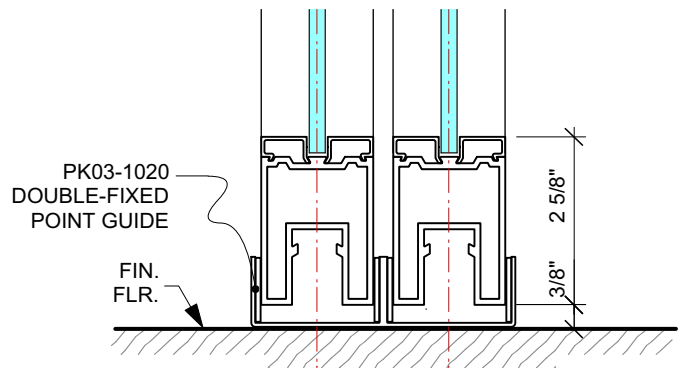
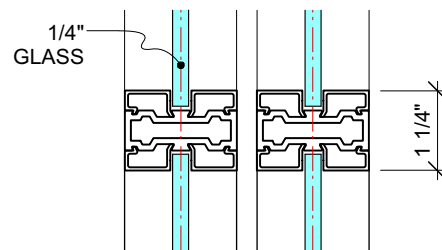
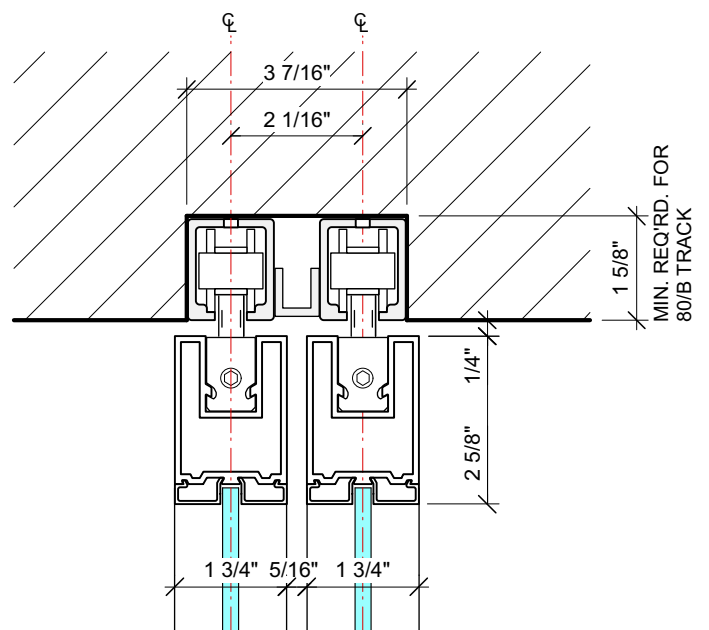
PK-30 system®

SLIDING DOORS



SIDE FIXED TO WALL TRACK
& CONTINUOUS FLOOR GUIDE

NOTE: DOOR WEIGHTS CAN BE
DETERMINED BY DOWNLOADING THE
"PK-30 DOOR WEIGHT CALCULATOR"
FROM PK30SYSTEM.COM



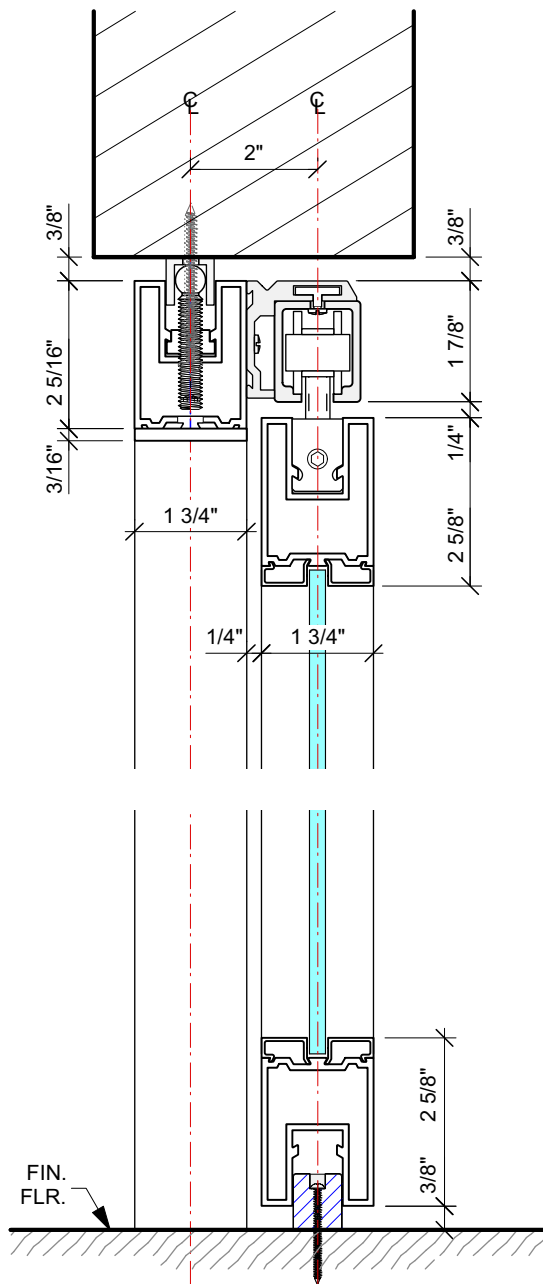
BYPASSING SLIDING DOORS

VERTICAL DETAIL
@ SLIDING DOOR W/ 80/B TRACK
MAX. DOOR WEIGHT - 176 LBS.

2.4

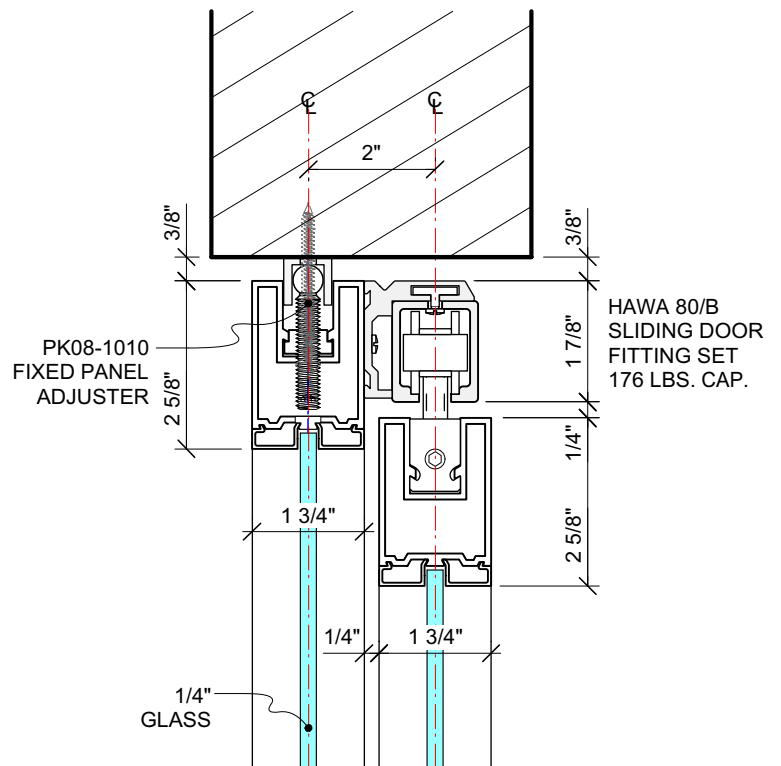
PK-30 system®

SLIDING DOORS



SIDE FIXED TO PK-30 SYSTEM
@ DOOR OPENING

NOTE: DOOR WEIGHTS CAN BE
DETERMINED BY DOWNLOADING THE
"PK-30 DOOR WEIGHT CALCULATOR"
FROM PK30SYSTEM.COM



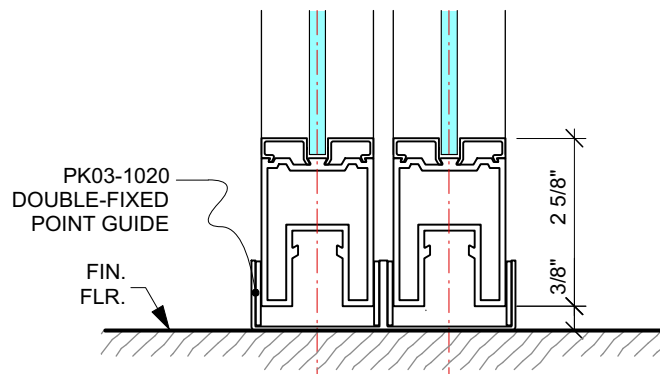
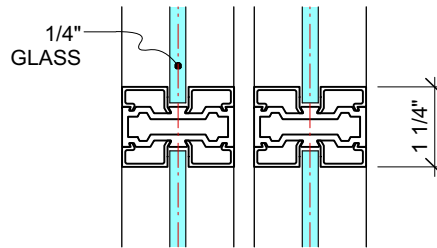
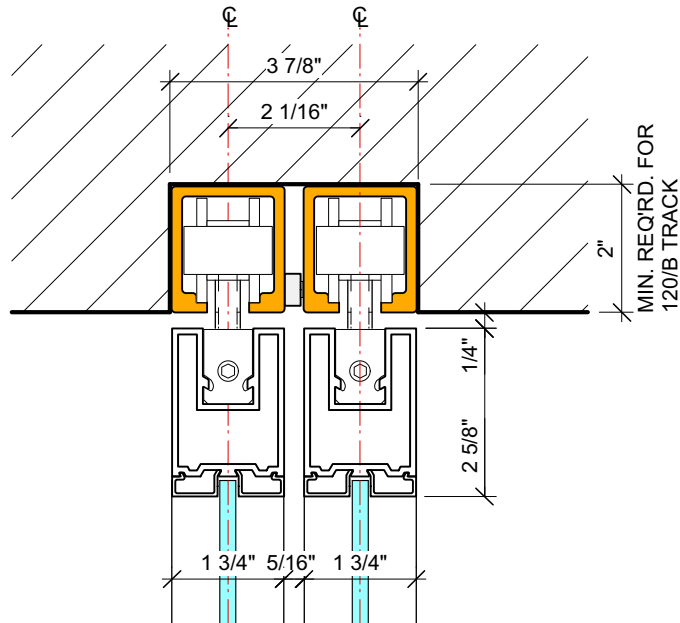
SIDE FIXED TO PK-30 SYSTEM
@ FIXED PANEL

VERTICAL DETAIL
@ SLIDING DOOR W/ 80/B TRACK
MAX. DOOR WEIGHT - 176 LBS.

2.5

PK-30 system®

SLIDING DOORS



BYPASSING SLIDING DOORS

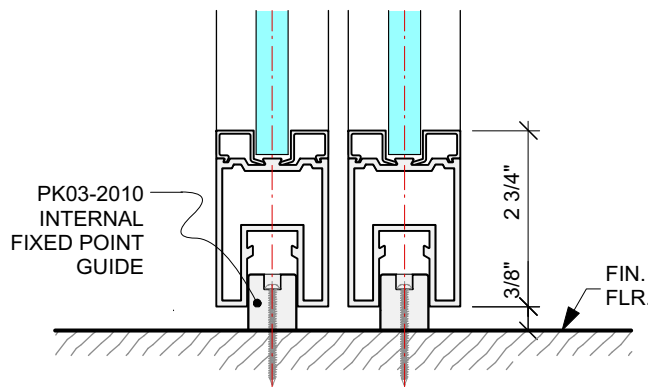
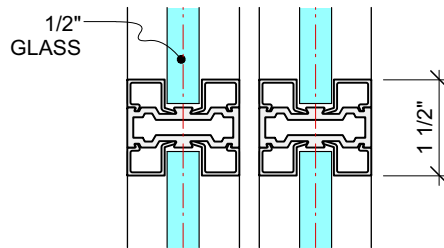
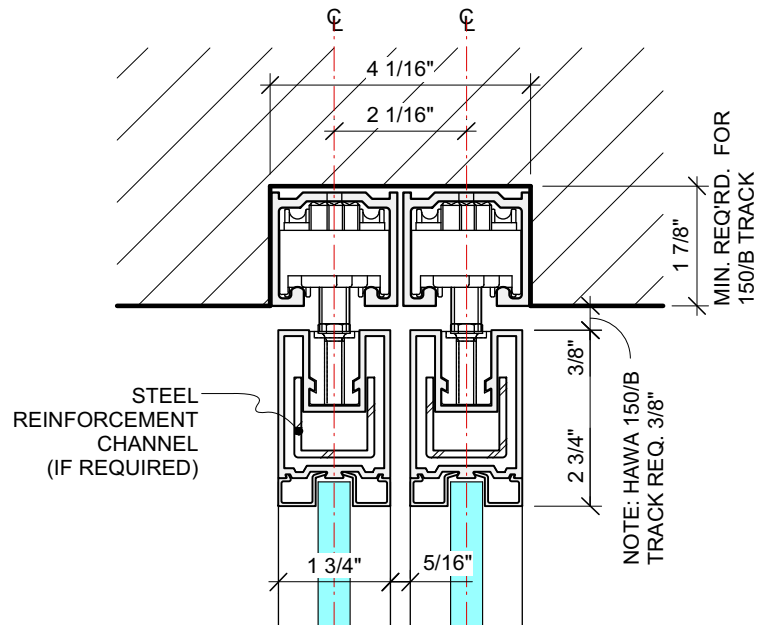
NOTE: DOOR WEIGHTS CAN BE
DETERMINED BY DOWNLOADING THE
"PK-30 DOOR WEIGHT CALCULATOR"
FROM PK30SYSTEM.COM

VERTICAL DETAIL
@ SLIDING DOOR
W/ 120/B TRACK
MAX. DOOR WEIGHT - 264 LBS.

2.6

PK-30 system®

SLIDING DOORS



BYPASSING SLIDING DOORS

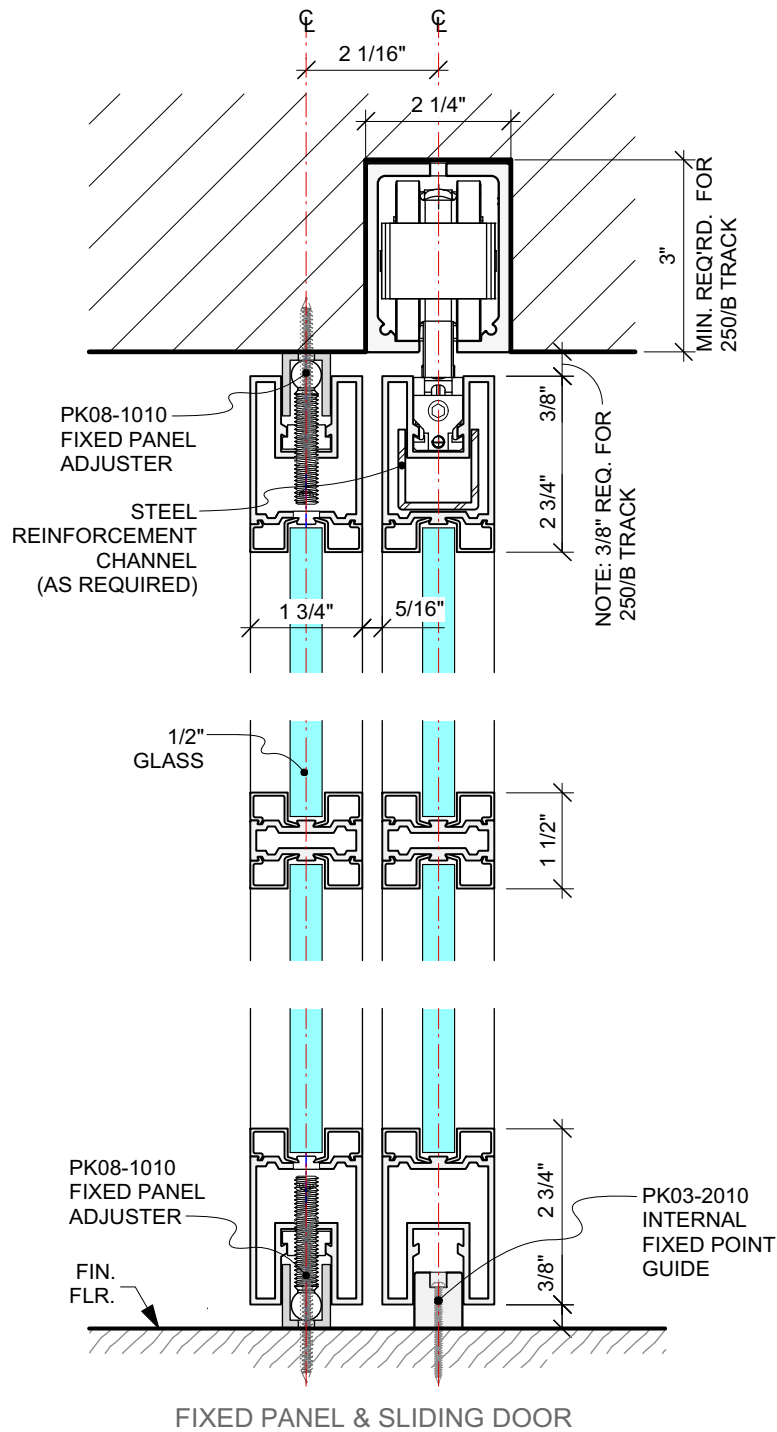
NOTE: DOOR WEIGHTS CAN BE DETERMINED BY DOWNLOADING THE "PK-30 DOOR WEIGHT CALCULATOR" FROM PK30SYSTEM.COM

VERTICAL DETAIL
@ SLIDING DOOR
W/ 150/B TRACK -
MAX. DOOR WEIGHT - 330 LBS.

2.7

PK-30 system®

SLIDING DOORS



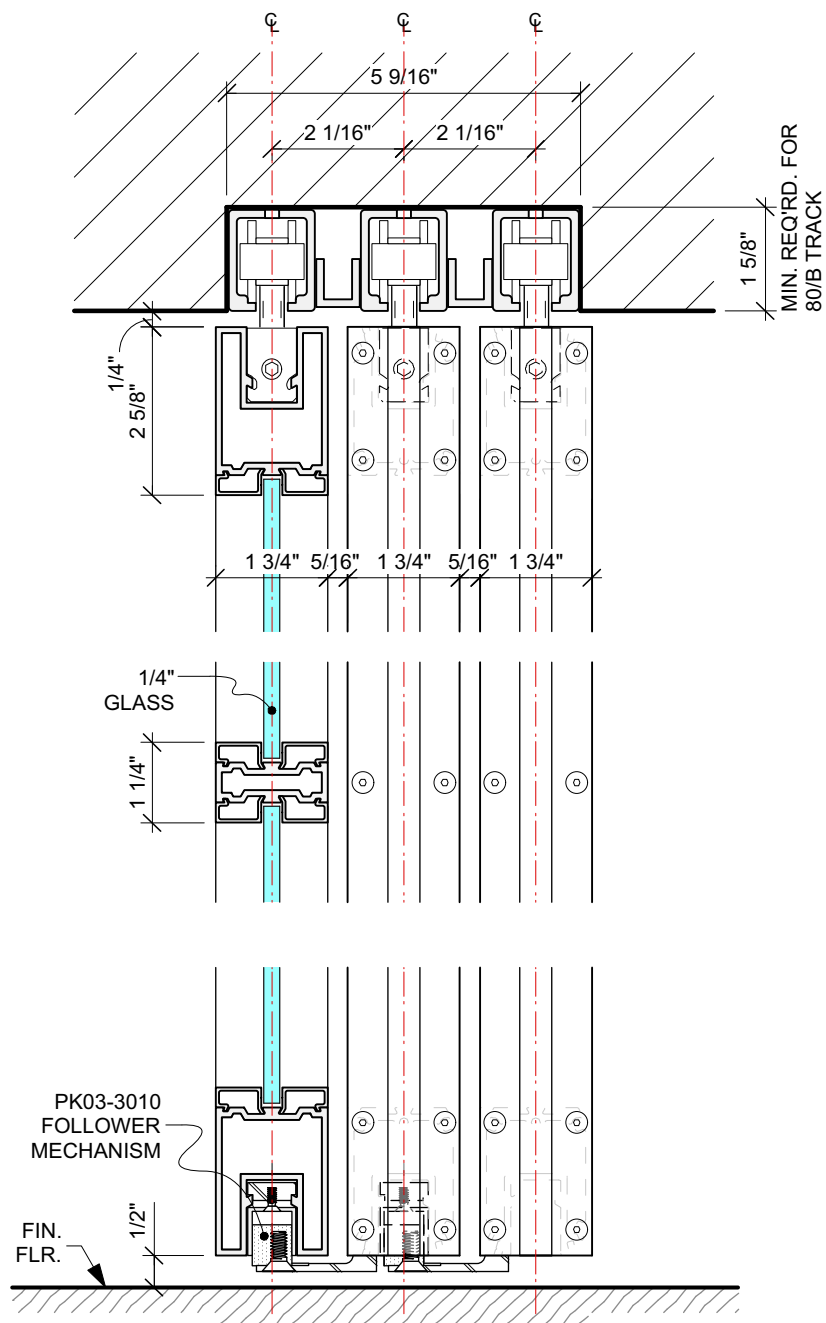
NOTE: DOOR WEIGHTS CAN BE DETERMINED BY DOWNLOADING THE "PK-30 DOOR WEIGHT CALCULATOR" FROM PK30SYSTEM.COM

VERTICAL DETAIL
@ FIXED PANEL & SLIDING DOOR
W/ 250/B TRACK -
MAX. DOOR WEIGHT - 550 LBS.

2.8

PK-30 system®

SLIDING DOORS



TRIPLE SLIDING DOOR
W/ FOLLOWER MECHANISM

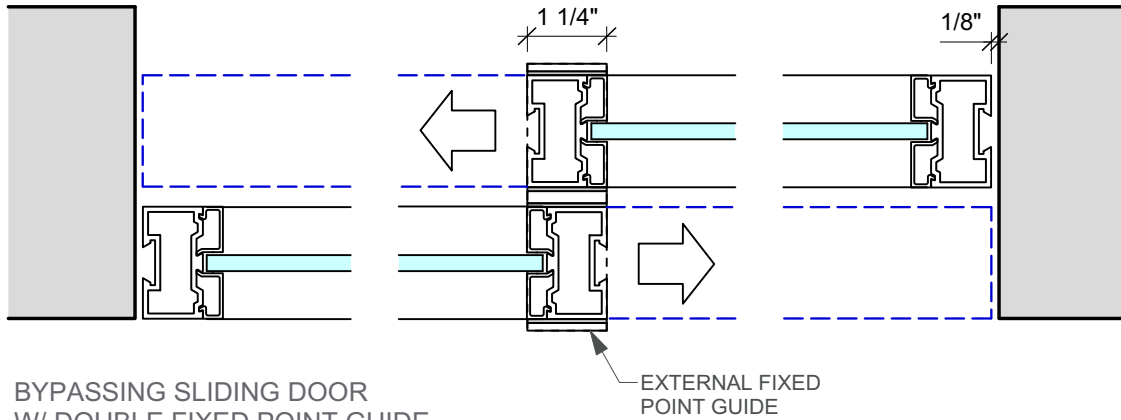
NOTE: DOOR WEIGHTS CAN BE
DETERMINED BY DOWNLOADING THE
"PK-30 DOOR WEIGHT CALCULATOR"
FROM PK30SYSTEM.COM

VERTICAL DETAIL
@ TRIPLE SLIDING DOOR
W/ 80/B TRACK &
FOLLOWER MECHANISM

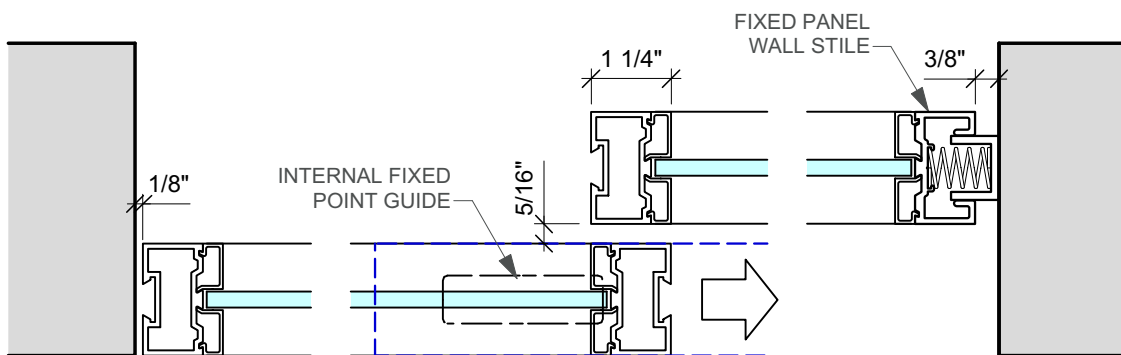
2.9

PK-30 system®

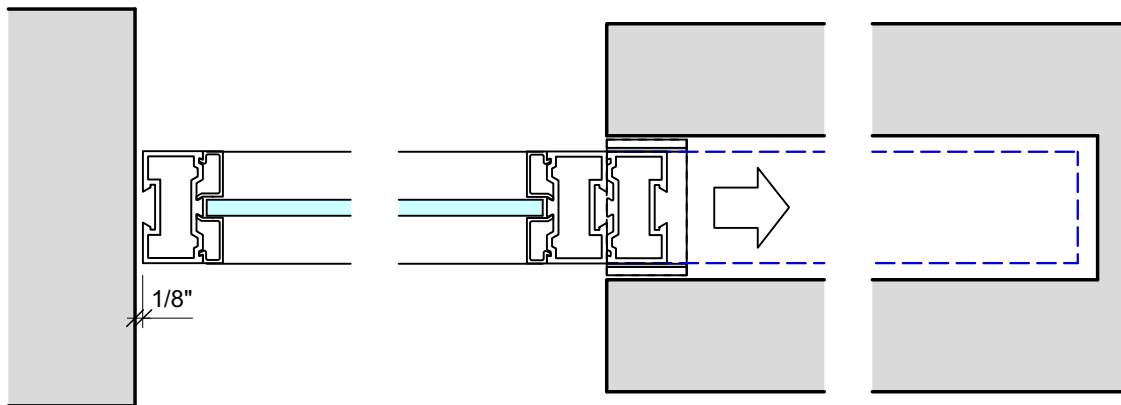
SLIDING DOORS



BYPASSING SLIDING DOOR
W/ DOUBLE FIXED POINT GUIDE



SLIDING DOOR & FIXED PANEL
W/ INTERNAL FIXED POINT GUIDE



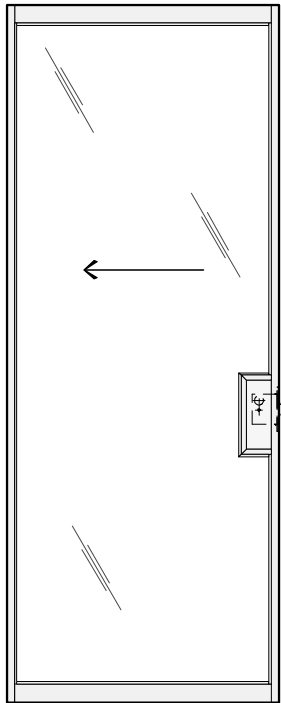
POCKET DOOR W/ FIXED POINT GUIDE

SLIDING & POCKET DOOR
PLAN DETAILS

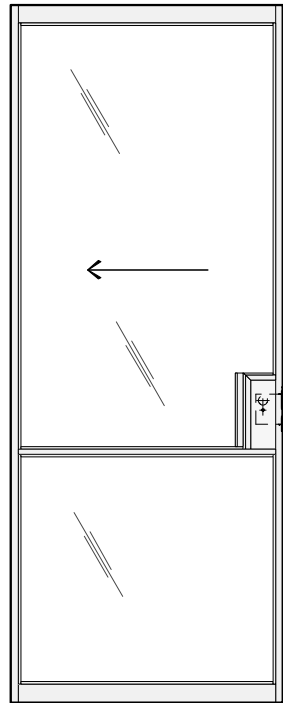
2.10

PK-30 system®

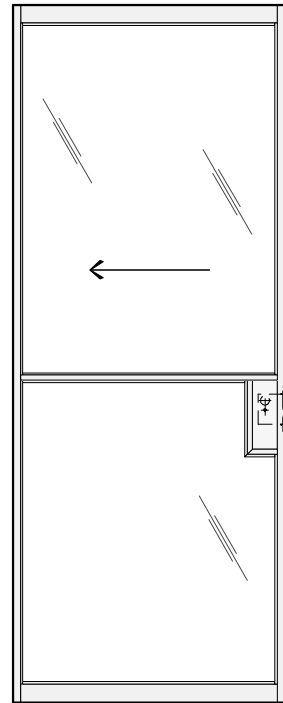
SLIDING DOORS



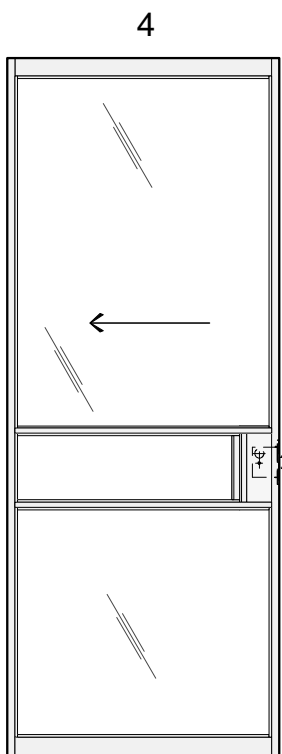
1



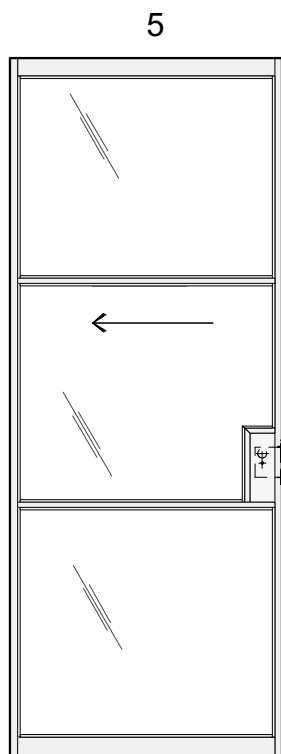
2



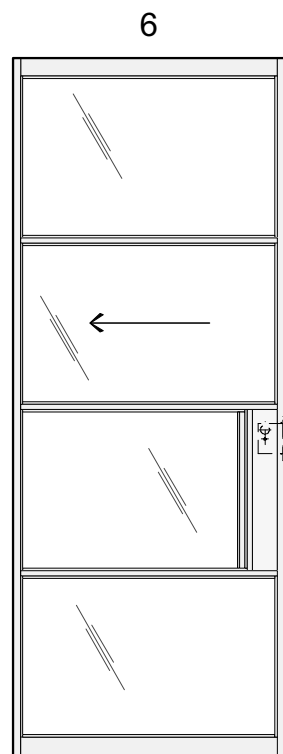
3



4



5



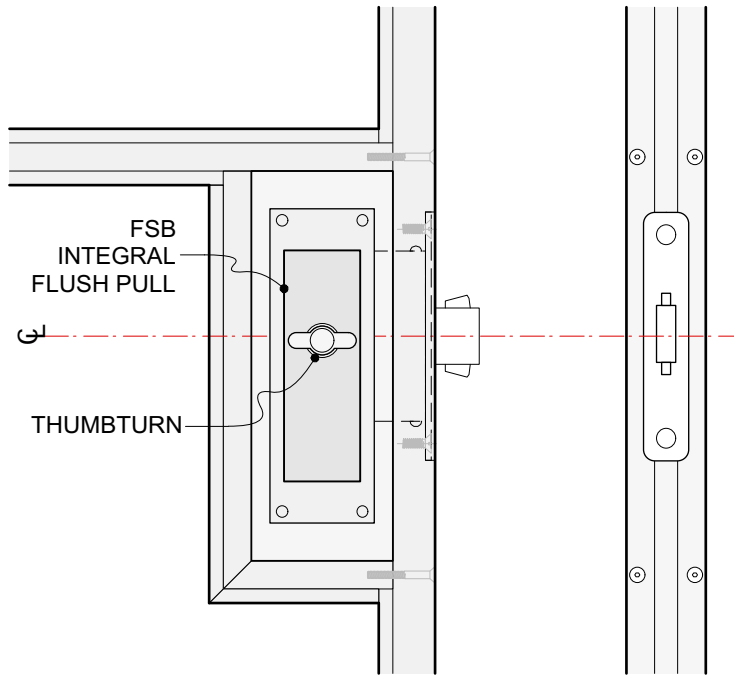
6

BASIC LOCK BOX
CONFIGURATIONS

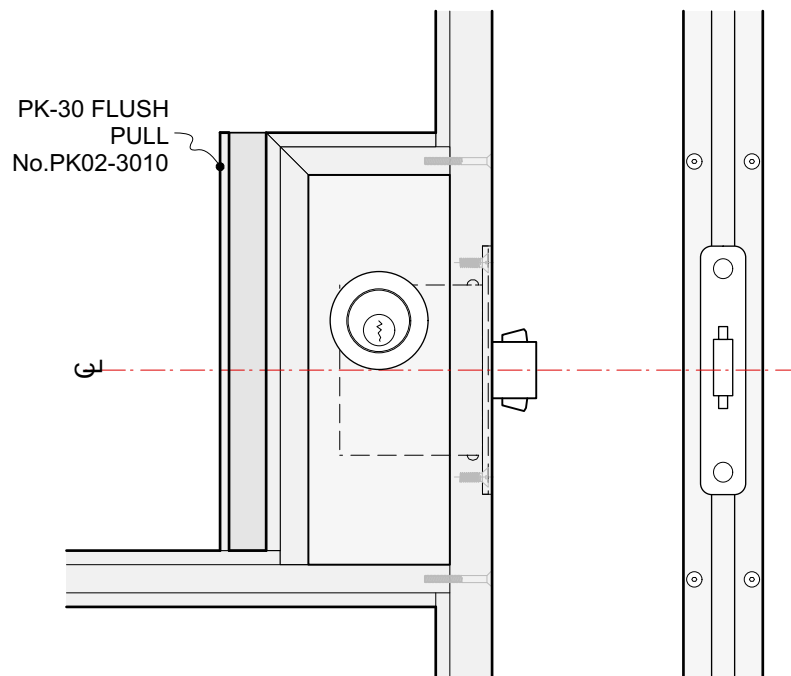
2.11

PK-30 system®

SLIDING DOORS



FSB SS 7001 SLIDING DOOR LOCK
W/ FSB INTEGRAL FLUSH PULL



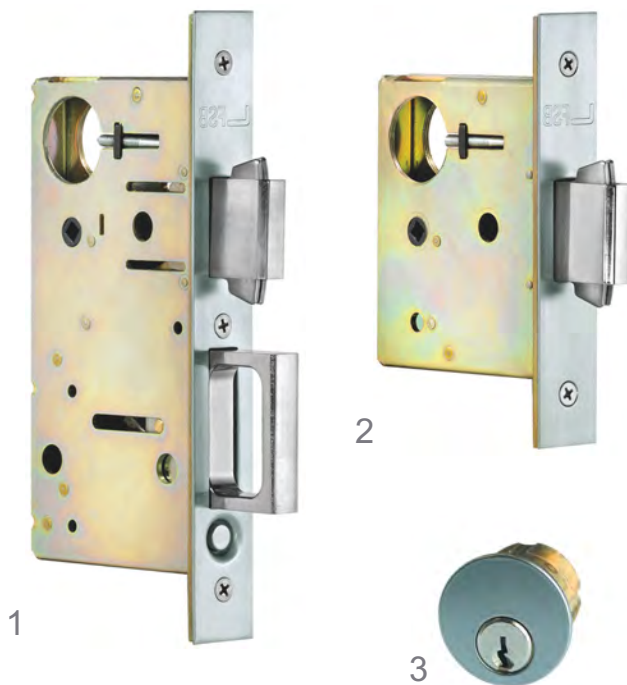
FSB SS 7001 SLIDING DOOR LOCK
W/ OPTIONAL PK-30 FLUSH PULL No.PK02-3010

LOCK BOX OPTIONS

2.12

PK-30 system®

SLIDING DOORS



FSB - sliding door hardware

- 1 - FSB standard sliding pocket door lock set
- 2 - FSB standard sliding door lock set
 - keyed lock
 - thumbturn
 - emergency release
- 3 - FSB mortise cylinder
- 4 - FSB flush pull trim sets for locking doors
 - keyed lock
 - thumbturn
 - emergency release

FSB premium grade sliding door locks for entry and privacy doors as well as pocket doors are standard. FSB flush pull trim or the PK02-3010 integral flush pull extrusion can be integrated into our lock-box. Locks are available in a variety of keyed and non-keyed functions. All FSB sliding locks are compatible with North American standard key cylinders. FSB ADA compliant sliding door locks with vertically mounted levers are a new and unique offering.

PK-30 system®



212.473.8050
www.pk30.com

2.13



PROJECT PHOTOS

2.14

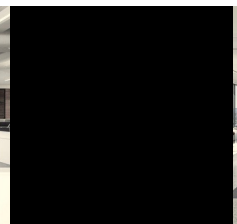
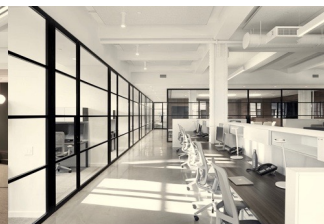
PK-30 system®

SLIDING DOORS



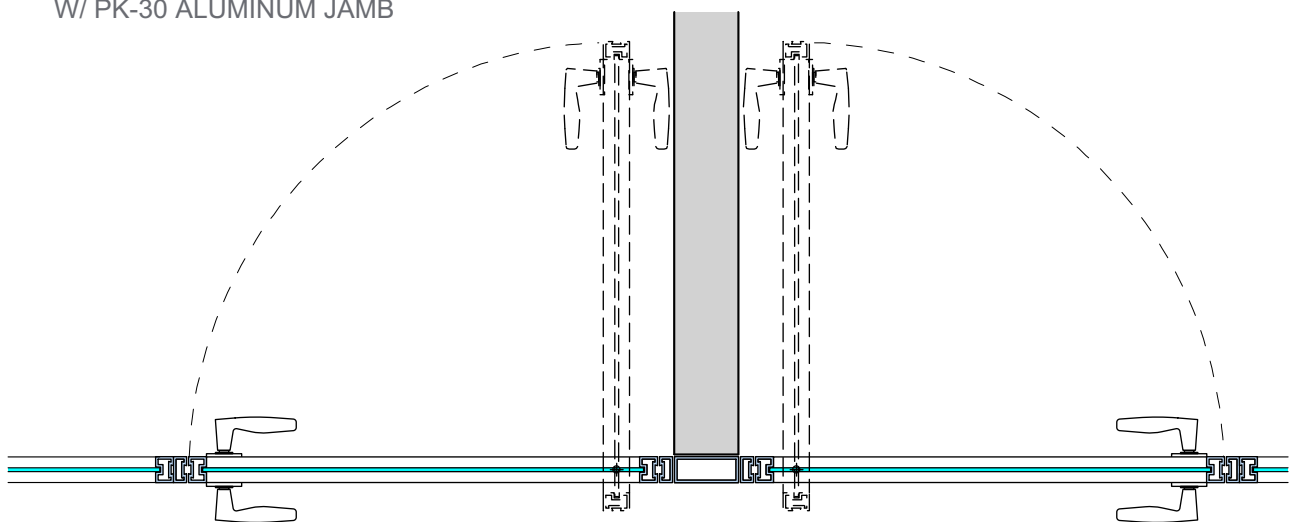
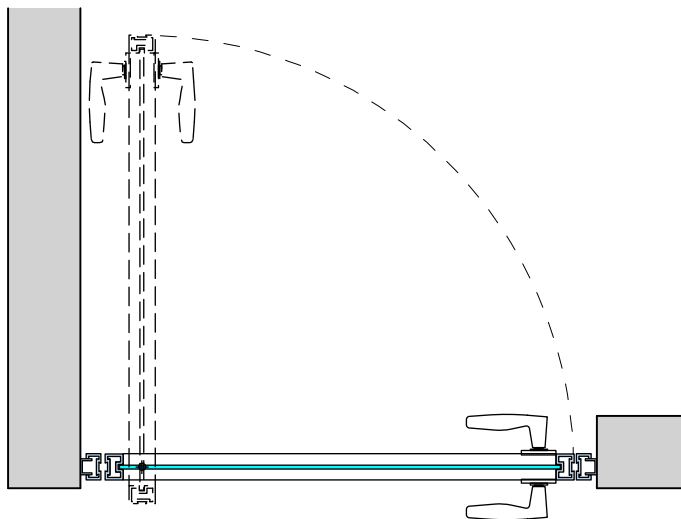
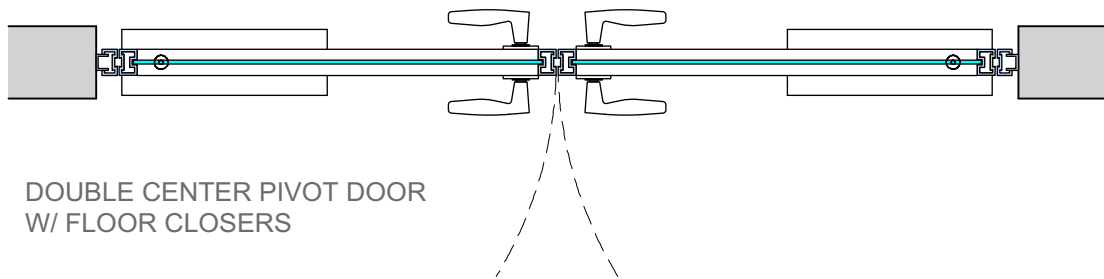
Swing door hinge options are offset or center pivot. Both options are designed and fabricated in-house. The offset pivot hinge can be customized for wide throw applications. The pivot point location of the center pivot is adjustable along the width of the door. PK30 aluminum door jambs with pivot hinges can be used in drywall and wood trimmed openings or with a PK30 transom panel above the door. Full mortise locks are available in all standard functions, or a surface mounted door pull combined with an overhead angle stop ball catch may be specified. See our hardware pages or the FSB catalog for more information. Hardware such as; door operators, door closers, electro-magnetic locks and electric strikes may be integrated into the system. Door heights of up to 12 feet are standard.

PK-30 system®



212.473.8050
www.pk30.com

3.1

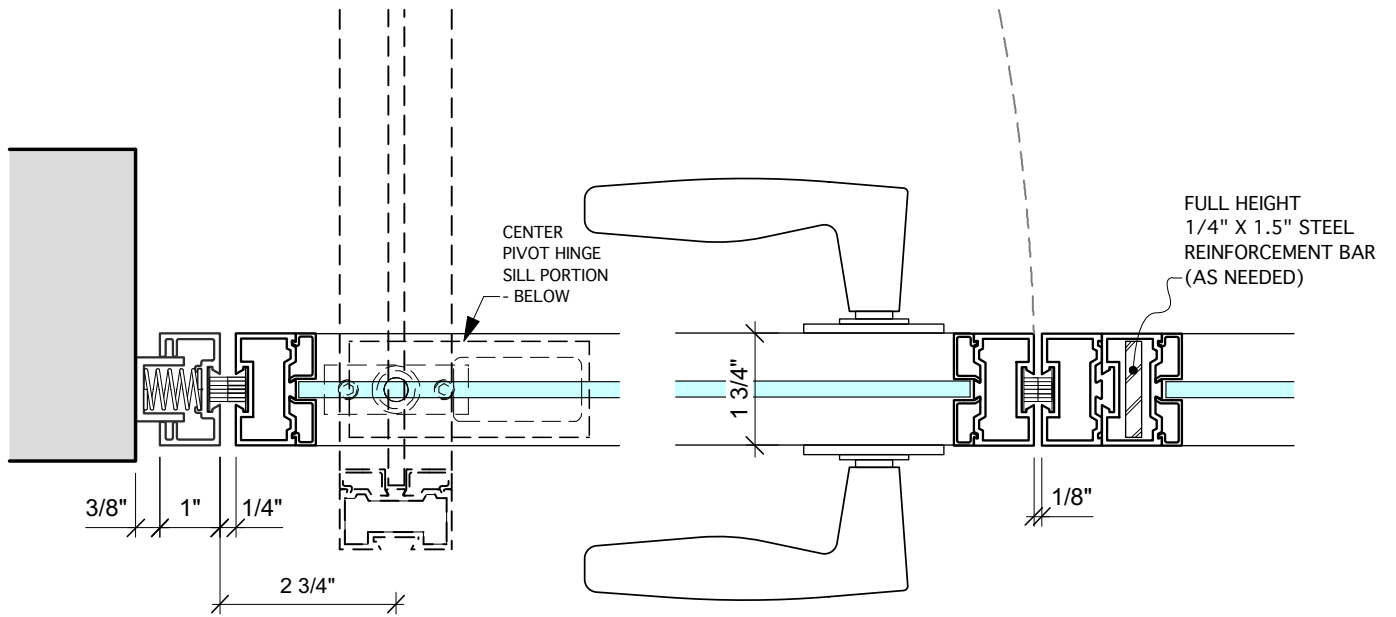


BASIC PIVOT DOOR PLAN CONFIGURATIONS

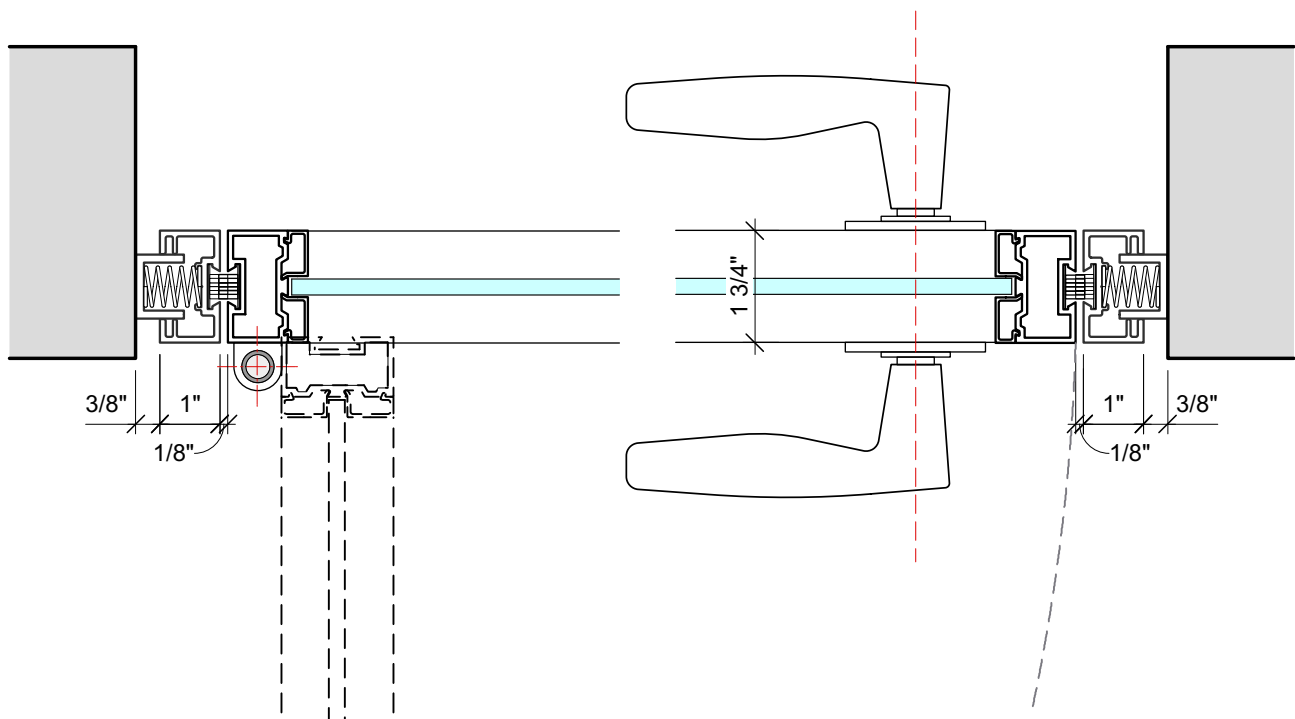
3.2

PK-30 system®

PIVOT DOORS



CENTER PIVOT HINGE DOOR
W/ PK-30 ALUMINUM JAMB



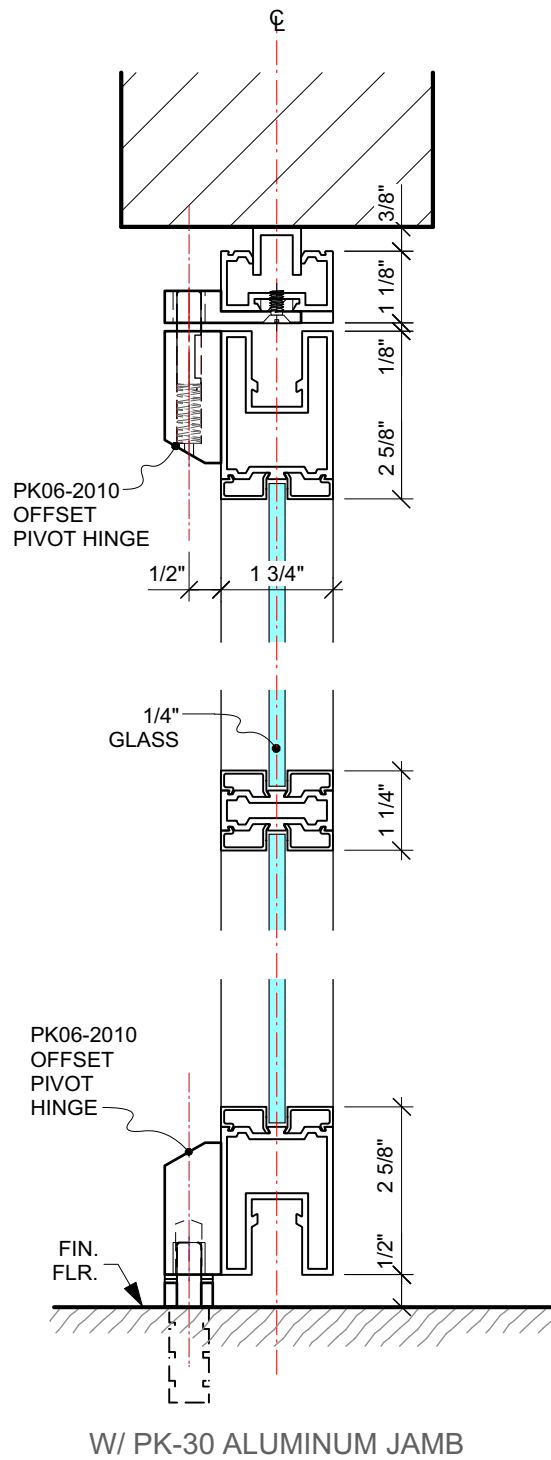
OFFSET PIVOT HINGE DOOR

CENTER PIVOT & OFFSET PIVOT HINGED DOOR PLAN DETAILS

3.3

PK-30 system®

PIVOT DOORS

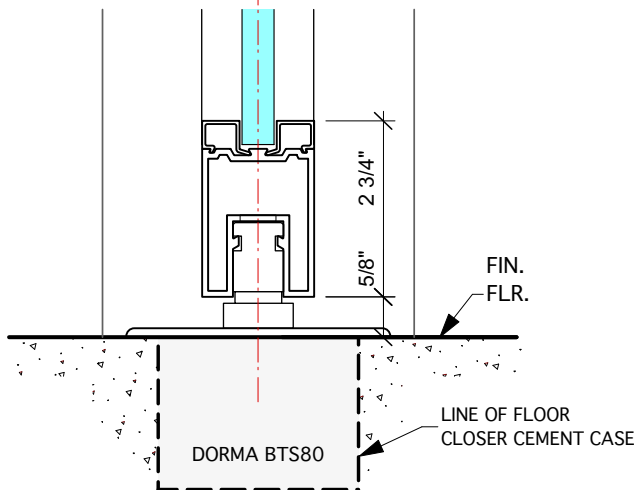
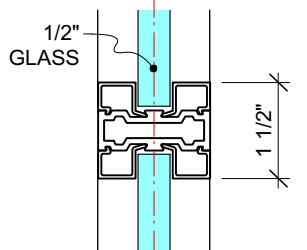
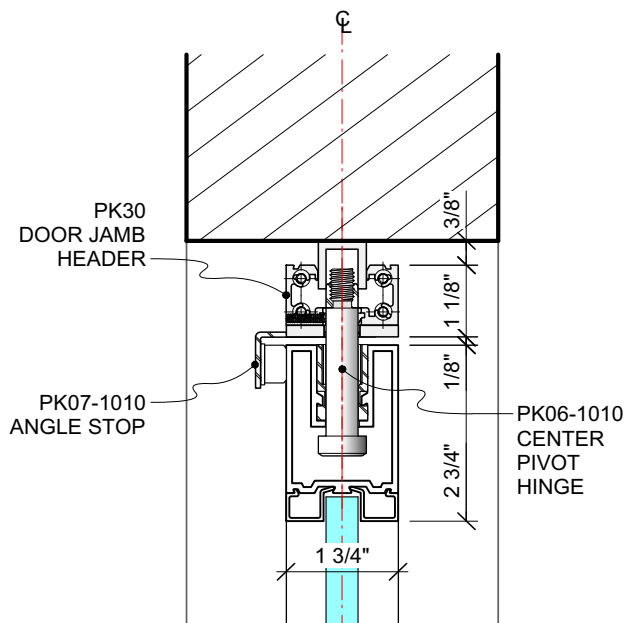


OFFSET PIVOT HINGE DOOR VERTICAL DETAILS

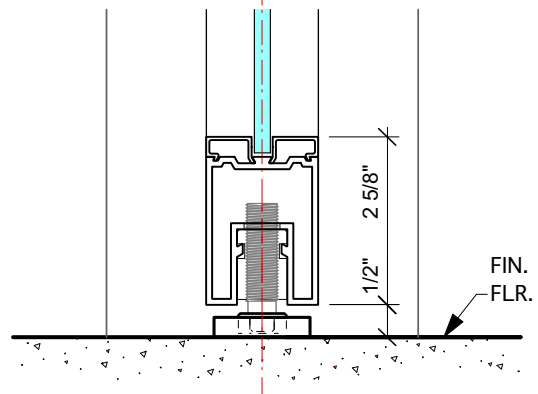
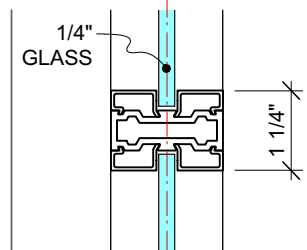
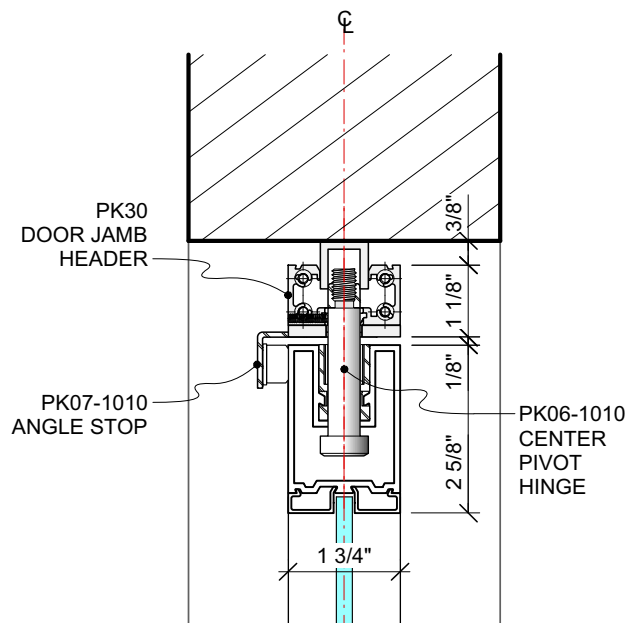
3.4

PK-30 system®

PIVOT DOORS



W/ FLOOR CLOSER



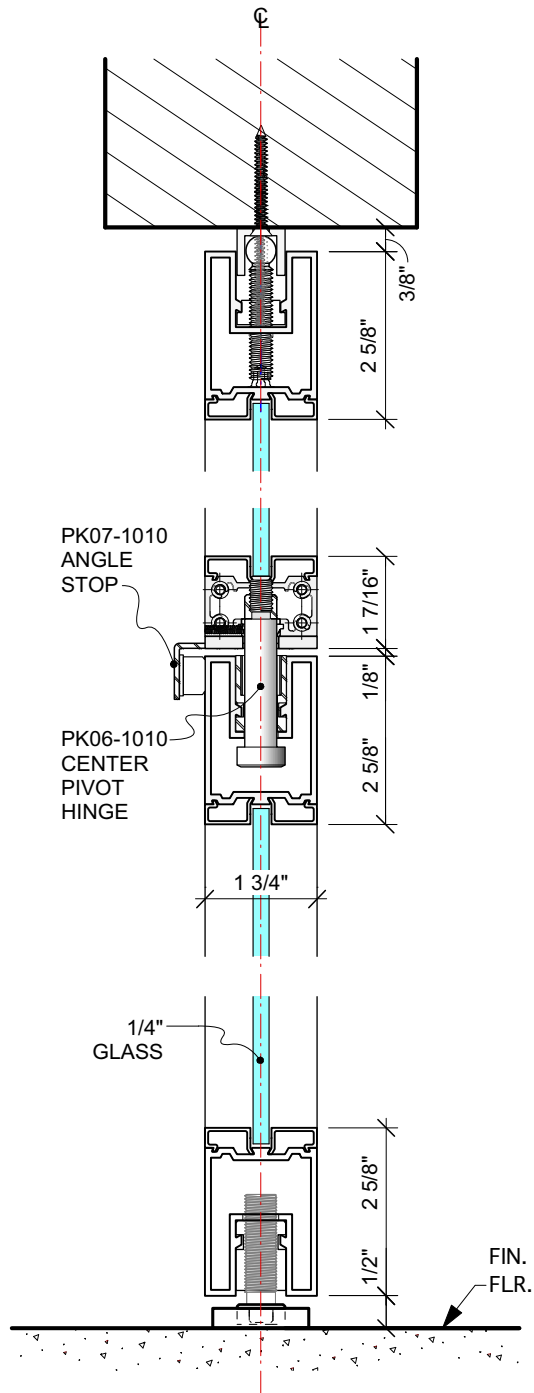
PK30 CENTER PIVOT HINGE

CENTER PIVOT HINGE DOOR
VERTICAL DETAILS

3.5

PK-30 system®

PIVOT DOORS

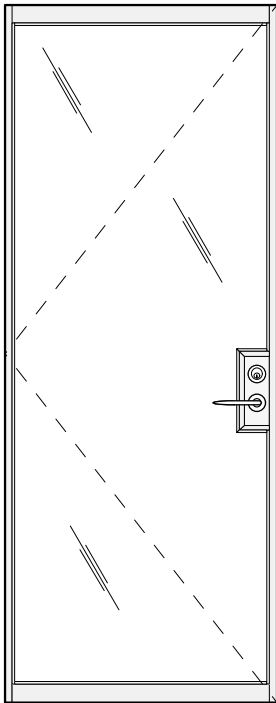


CENTER PIVOT HINGE DOOR
VERTICAL DETAIL
W/ TRANSOM ABOVE

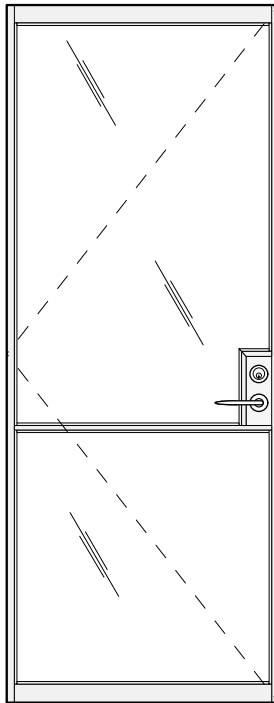
3.6

PK-30 system®

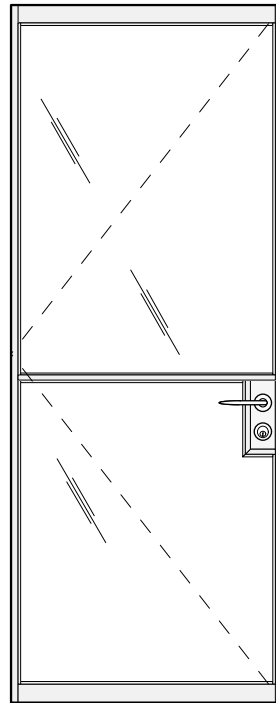
PIVOT DOORS



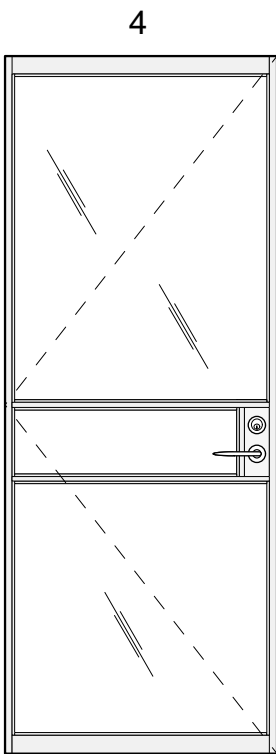
1



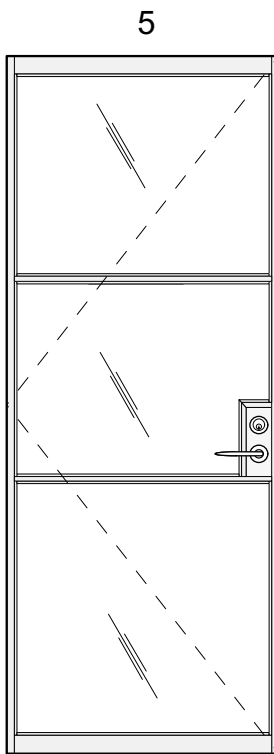
2



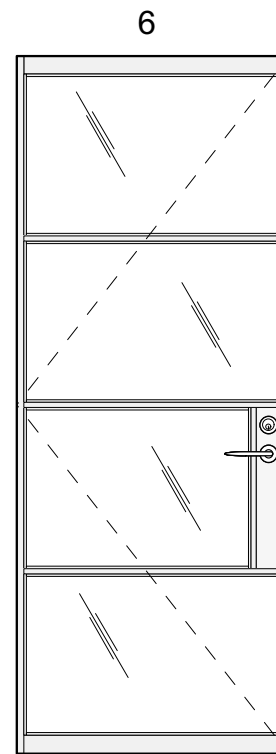
3



4



5



6

BASIC LOCK BOX
CONFIGURATIONS

3.7

PK-30 system®

PIVOT DOORS



Choose from FSB's extensive selection of levers, knobs in various metals and finishes.



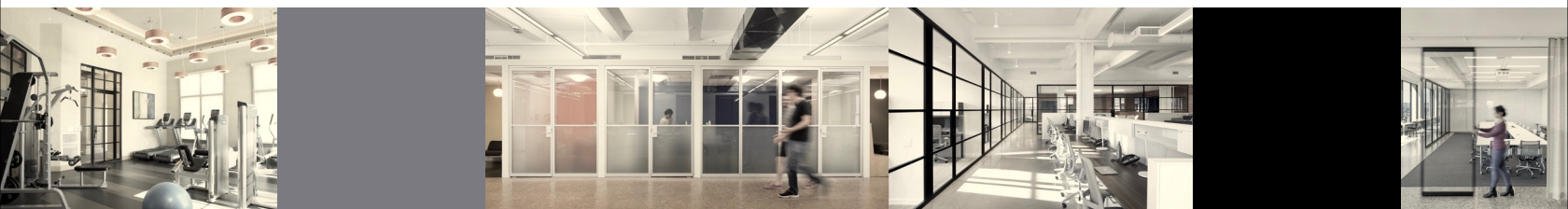
FSB full mortise lock



LOCKS -

We recognize the important role played by the door hardware in providing our customers with a quality finished product. Fortunately there is a door hardware manufacturer that shares our aesthetic and determination to have design make a difference. That is why we have partnered with FSB USA. FSB has produced door hardware for over a century. FSB's lever designs are so admired that four have been added to MoMA's permanent collection. Swing Door full mortise ANSI A Grade 1 locks are available in all standard functions. FSB has an extensive selection of levers and knobs in various metals and finishes. FSB locks are supplied with standard North American cylinders allowing you to match building standard keyways.

PK-30 system®



212.473.8050
www.pk30.com

3.8

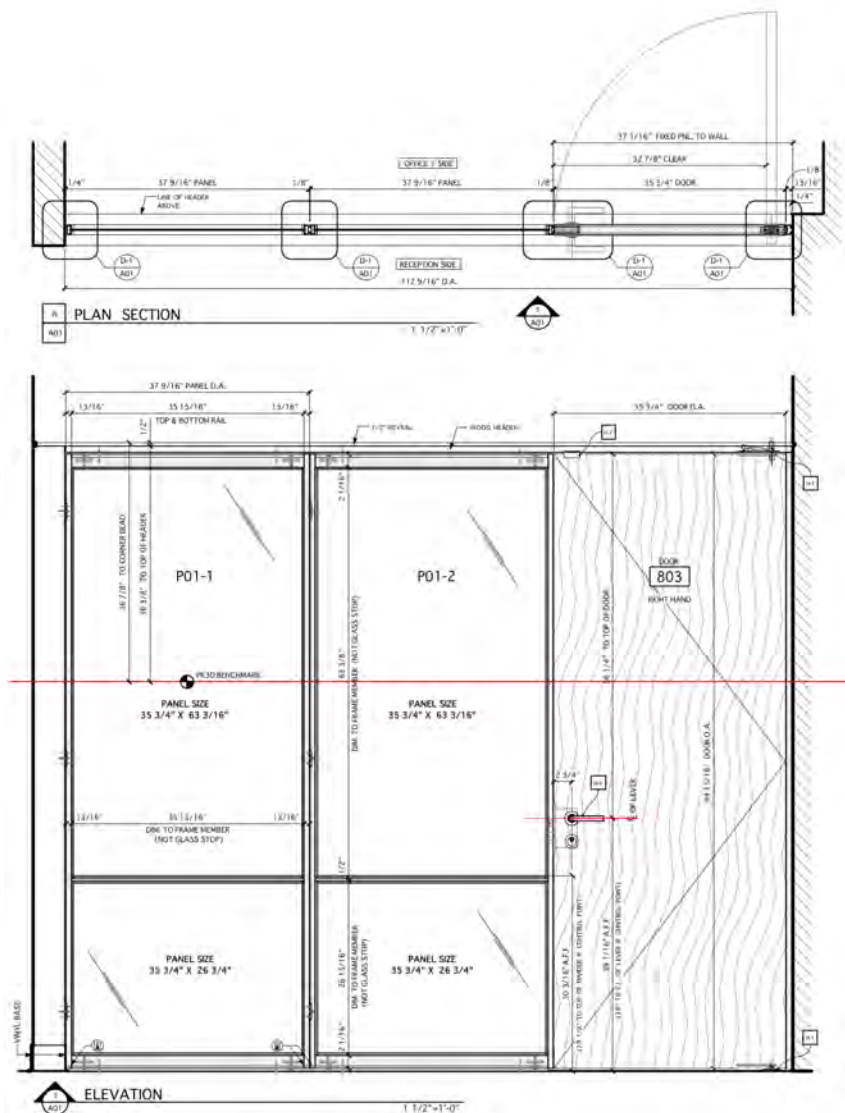


PROJECT PHOTOS

3.9

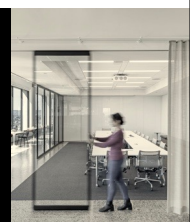
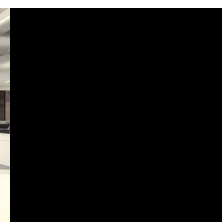
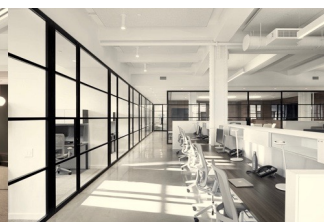
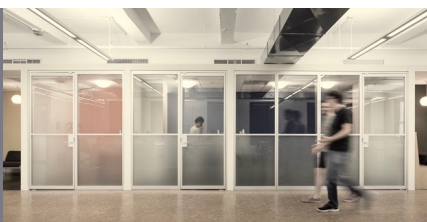
PK-30 system®

PIVOT DOORS



The system will accommodate standard 1-3/4 inch thick flush wood doors. Doors are made to order and factory machined for hardware i.e., locks hinges and flush-bolts. Factory machining allows doors to arrive at the job site prepped and ready for installation, saving time, ensuring quality and accuracy. Fabricated using Particle Board Core or FSC Certified Particle Board Core construction. Factory-finishing for the best possible result; uniform color, texture, and sheen. Factory finished doors offer the ultimate in quality, environmental consideration, and economical results.

PK-30 system®



212.473.8050
www.pk30.com

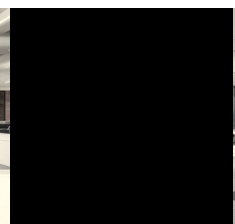
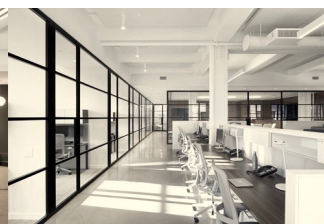
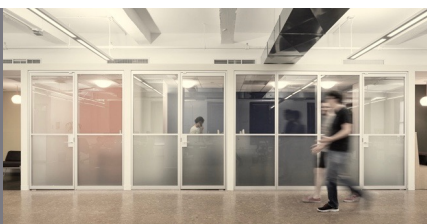
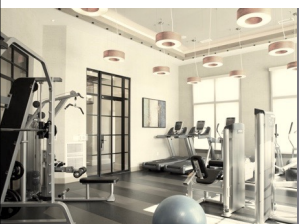
4.1

WOOD DOORS



Fixed panels up to 12 feet in height and up to 12 feet in width are standard. Vertical, horizontal or crossed mullions may be specified. All fixed panels have built-in height and sidewall adjusters to accommodate out of level conditions. Fixed panels may be ganged together, the panel-to-panel connectors automatically set 1/8" reveals between panels. Clear sight lines and wide expanses of glass is achieved by specifying butt glazing. Panels up to 12 feet wide may be butt glazed as well as 90° inside and outside panel corners. Fixed panel segmented curved walls are also possible.

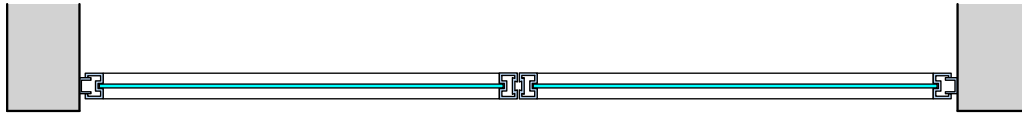
PK-30 system®



212.473.8050
www.pk30.com

5.1

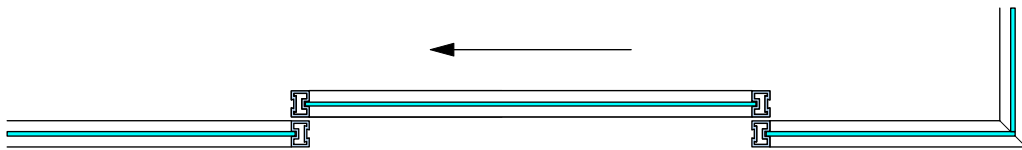
FIXED PANELS



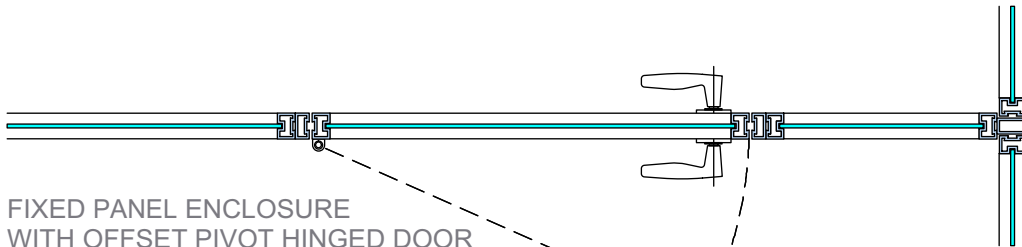
FIXED PANELS



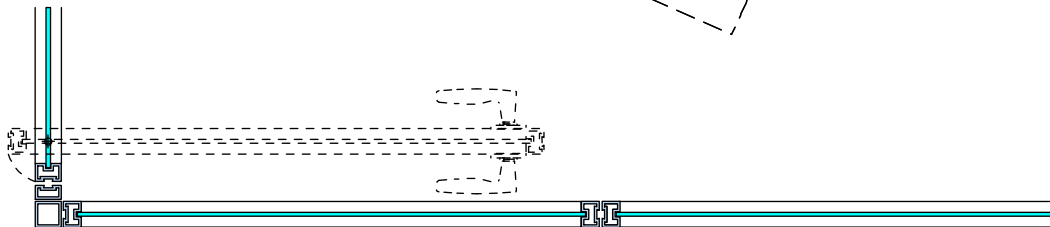
FIXED PANEL ENCLOSURE W/ CORNER POST



FIXED PANEL ENCLOSURE
WITH SLIDING DOOR & BUTT GLAZED CORNER



FIXED PANEL ENCLOSURE
WITH OFFSET PIVOT HINGED DOOR



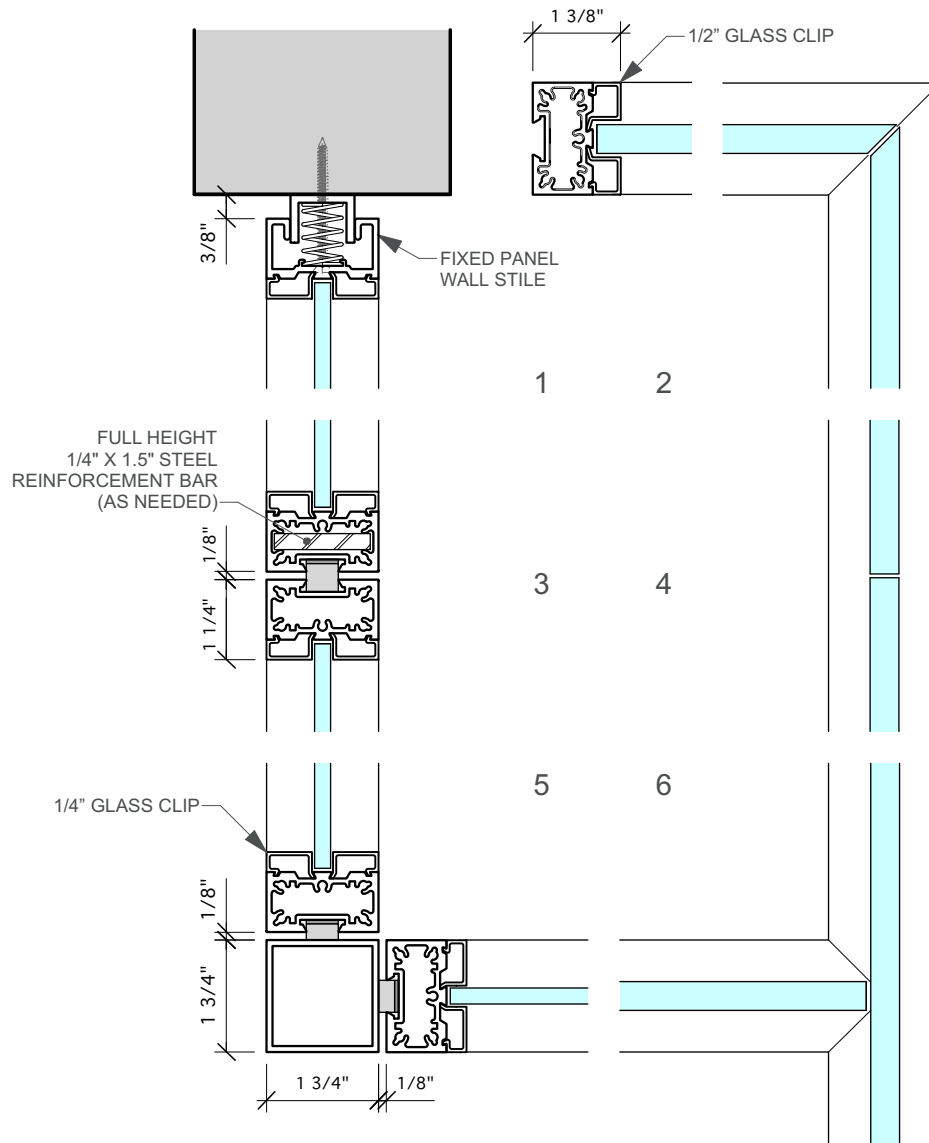
FIXED PANEL ENCLOSURE W/ CENTER PIVOT HINGED DOOR

BASIC FIXED PANEL PLAN
CONFIGURATIONS

5.2

PK-30 system®

FIXED PANELS



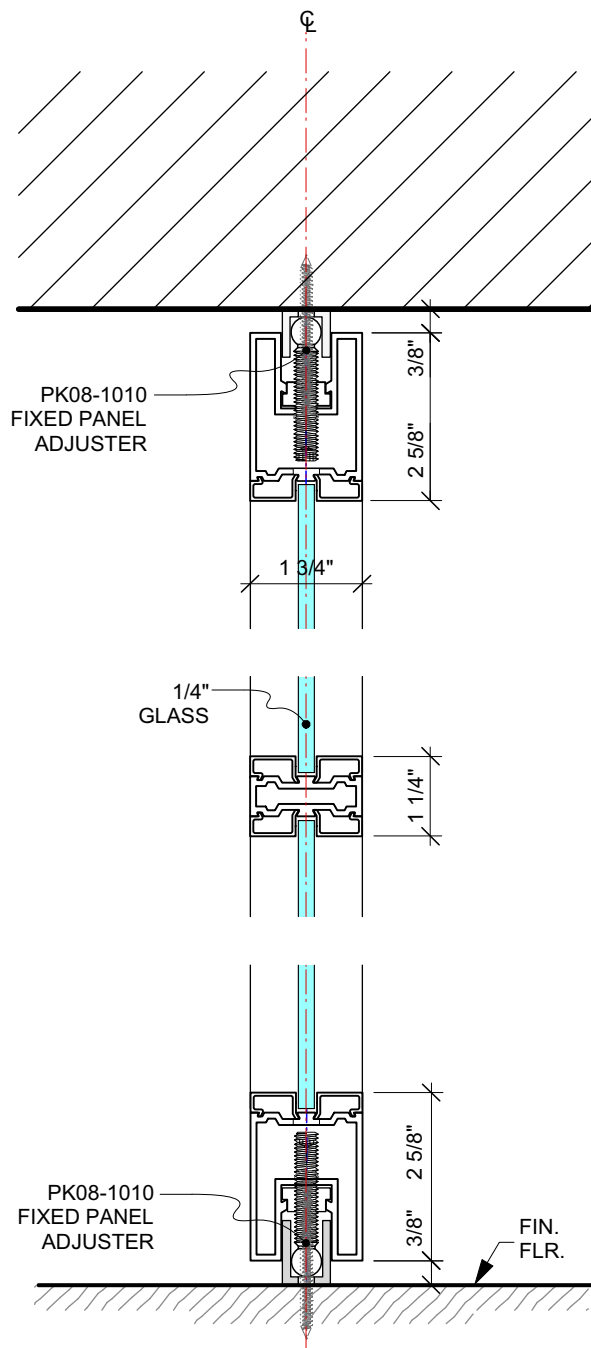
- 1 - FIXED PANEL CONNECTION @ WALL
- 2 - BUTT GLAZED CORNER
- 3 - FIXED PANEL TO FIXED PANEL CONNECTION
- 4 - BUTT GLAZED FIXED PANEL
- 5 - FIXED PANELS
W/ ALUMINUM CORNER POST
- 6 - FIXED PANEL BUTT GLAZED "T" CONNECTION

FIXED PANEL PLAN DETAILS

5.3

PK-30 system®

FIXED PANELS

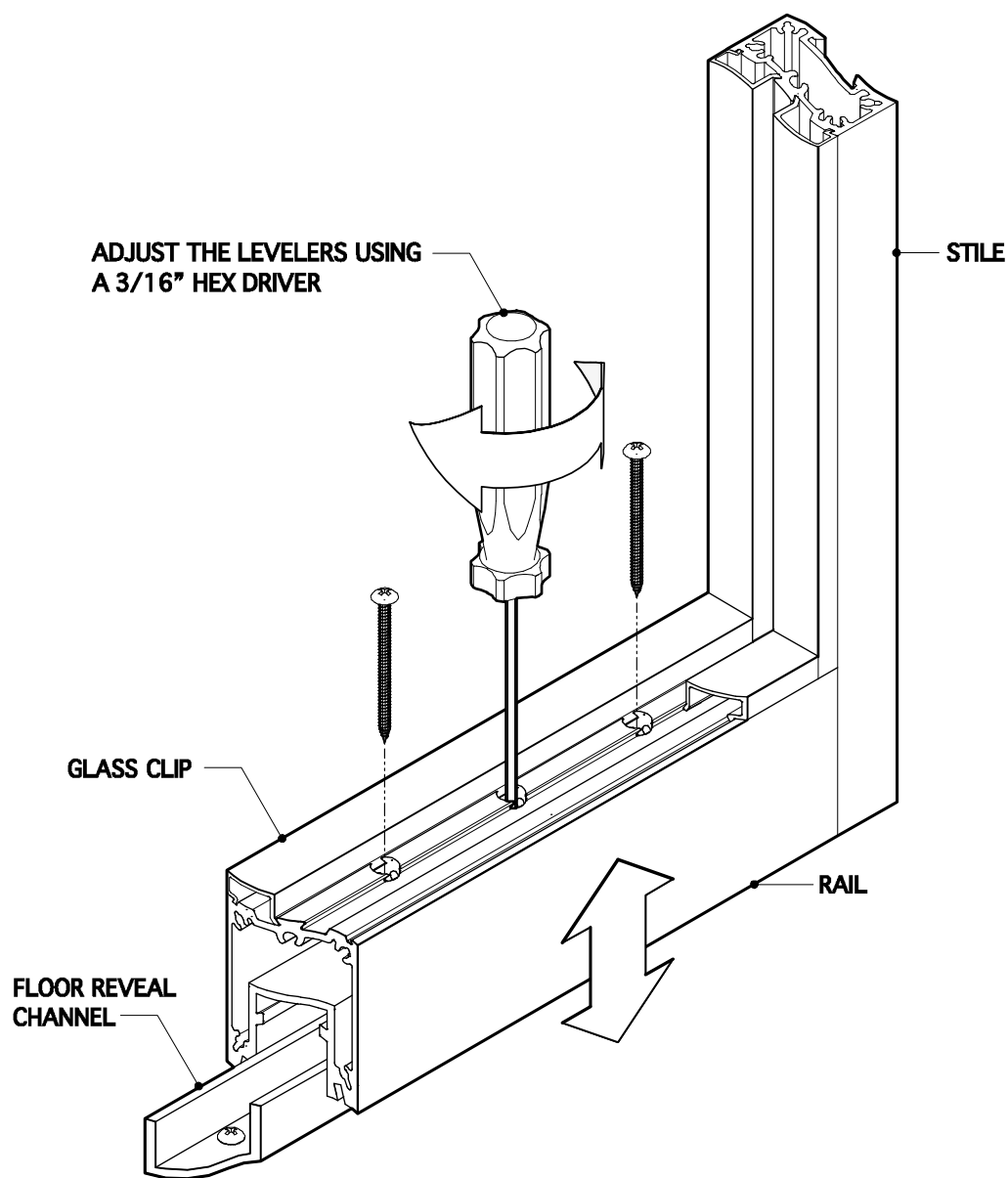


VERTICAL DETAIL
@ FIXED PANEL

5.4

PK-30 system®

FIXED PANELS

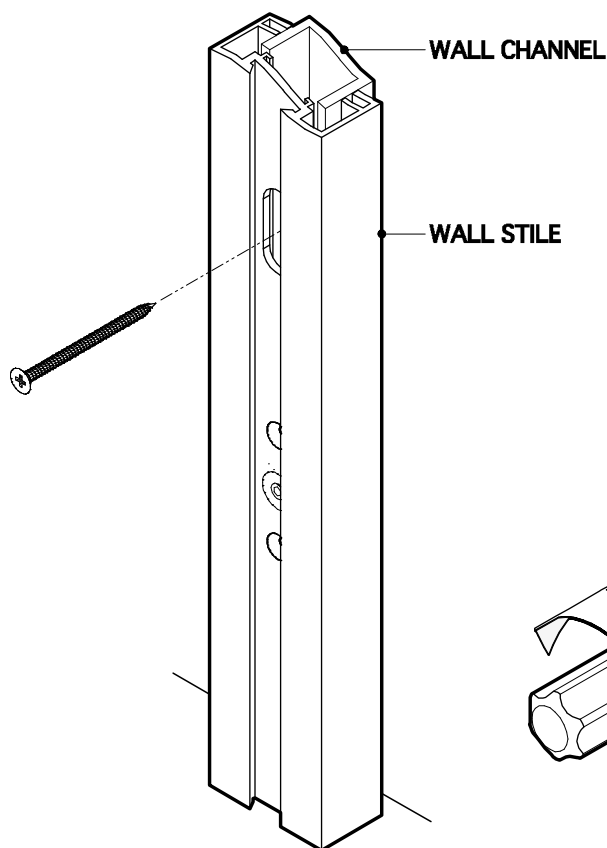


FIXED PANEL
RAIL INSTALLATION DETAIL

5.5

PK-30 system®

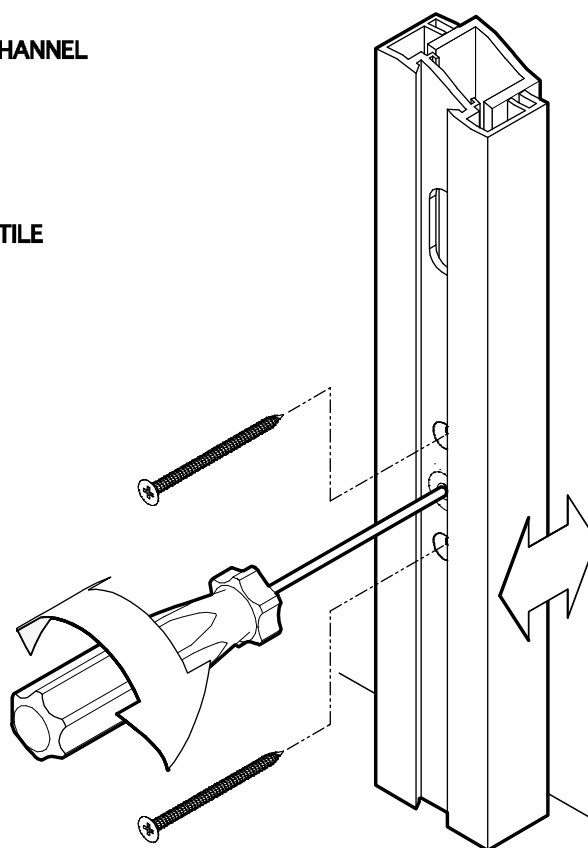
FIXED PANELS



A

FASTEN "WALL CHANNEL" TO WALL

Note: Adjust the Wall Channel's height so that it aligns with the top & bottom of the Wall Stile



B

SECURE THE WALL STILE TO THE SIDE WALL USING THE SUPPLIED FASTENERS AND BY ADJUSTING THE "BACK-OUT" SCREWS TO HOLD THE REVEAL DIMENSIONS.

Note: "Back-Out" screws are rivet nuts with set screws adjacent to the through fastener locations. Tighten these set screws with 1/8" Hex Driver to lock the Wall Stile into place.

FIXED PANEL WALL STILE
& DOOR WALL STILE
INSTALLATION DETAIL

5.6

PK-30 system® ::::

FIXED PANELS



PROJECT PHOTOS

5.7

PK-30 system®

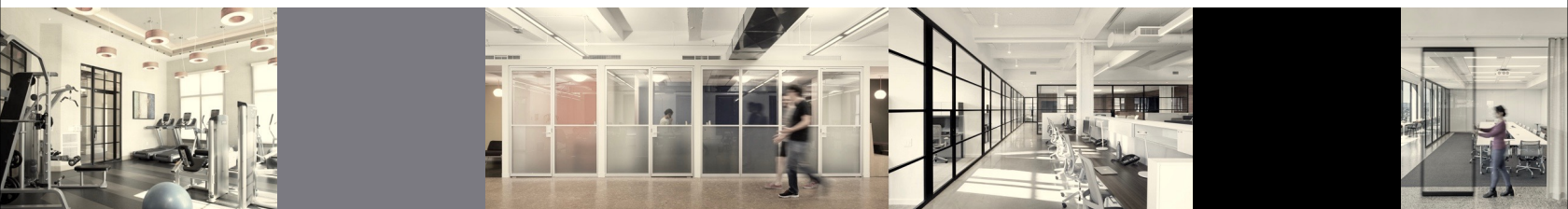
FIXED PANELS



PK-30 Operable partitions open up infinite possibilities.

- Centerfold is a high quality accordion partition hardware system for variable room partitions up to 39 feet in width. The suspension point for this system is located at the panel center. Extremely wide installations are possible without bottom guide channels.
- Variofold is a high quality Bi-folding partition system. A bottom guide channel provides firm stability for installations with more than two doors per side.
- Variotec is a sliding stacking solution. Its modular, pluggable track system will follow your plans around and into every corner, giving you free rein even for large-scale installations. You may neatly stack a virtually limitless number of panels in the parking area. The sliding/stacking top tracks may be curved or bent within 15° to 90° to customer specifications.

PK-30 system®

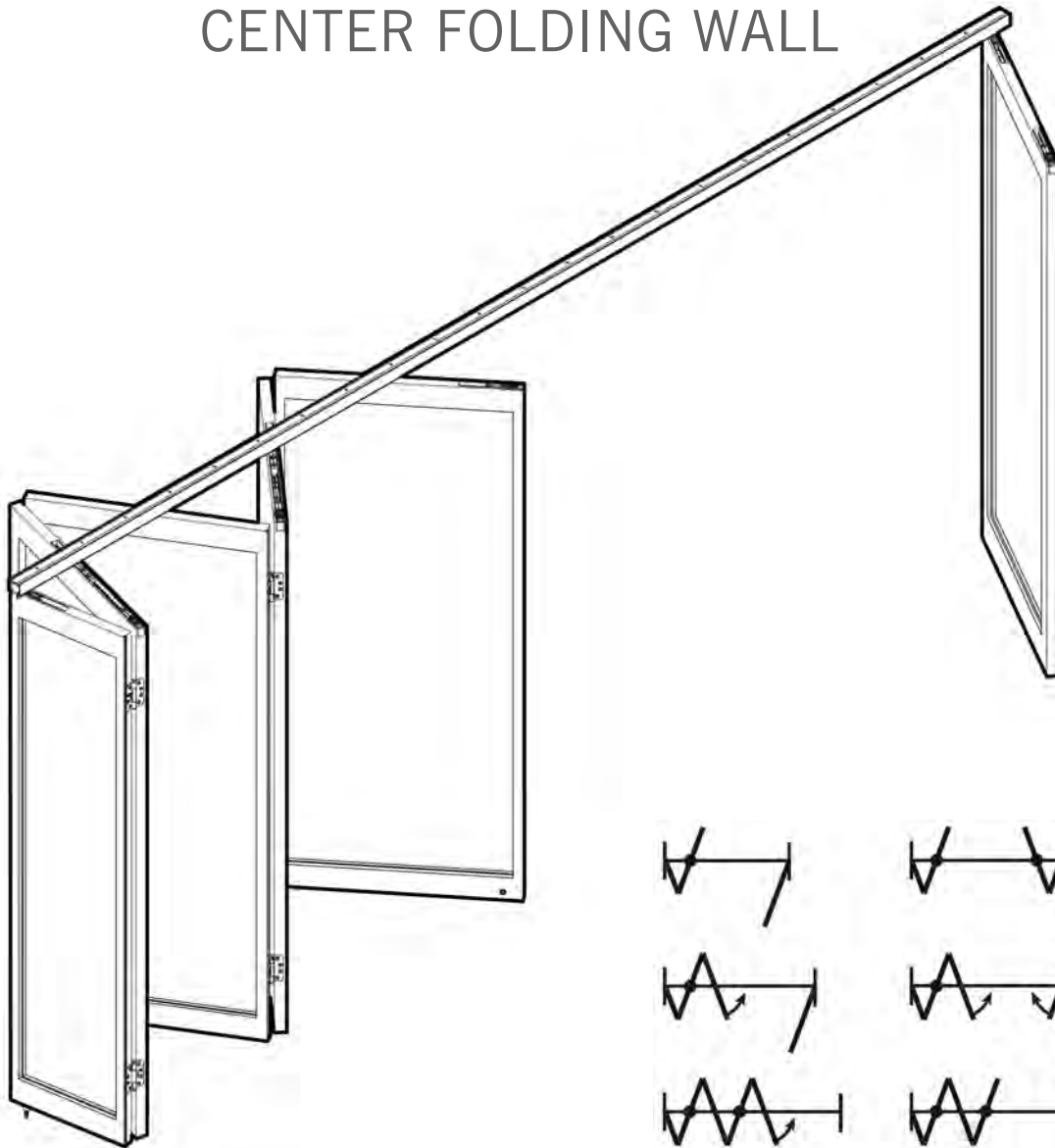


212.473.8050
www.pk30.com

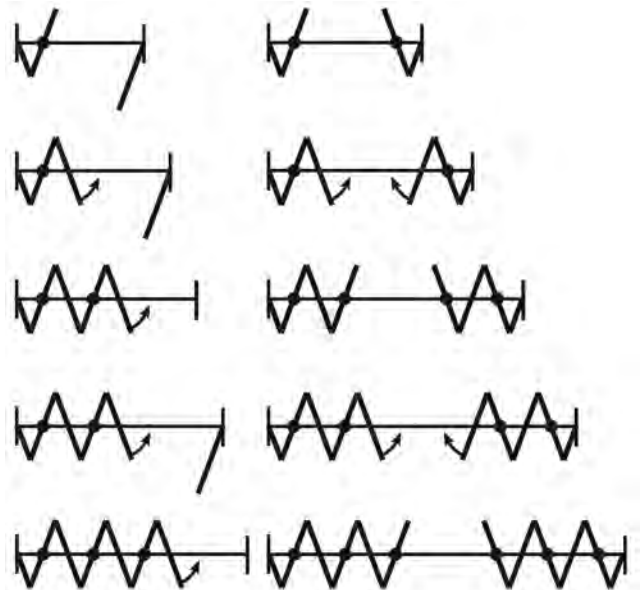
6.1

OPERABLE PARTITIONS

CENTER FOLDING WALL



FLOOR GUIDE NOT REQUIRED



EXAMPLES OF SOME OF THE POSSIBILITIES

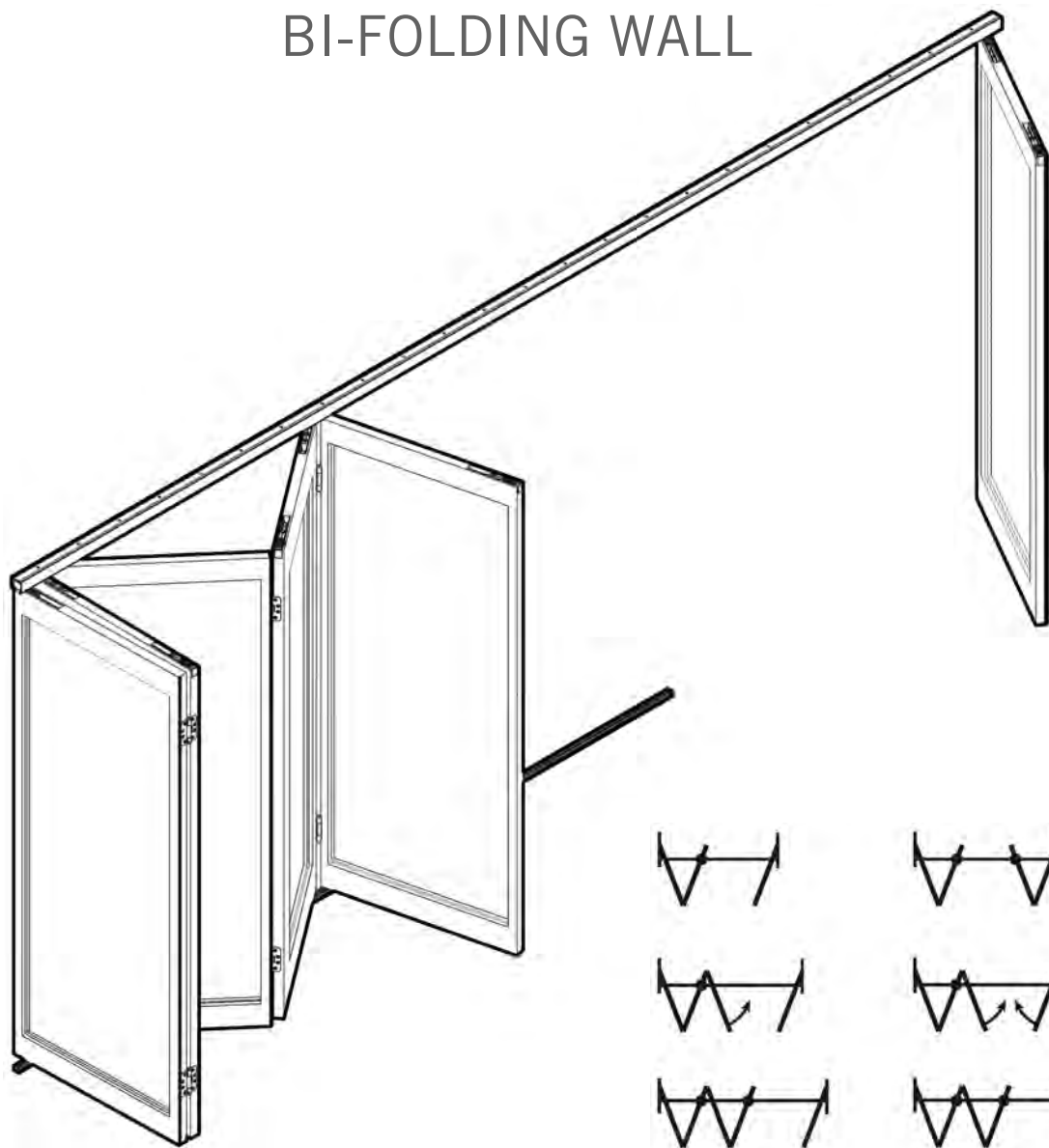
CENTER FOLDING WALL
PLAN CONFIGURATIONS

6.2

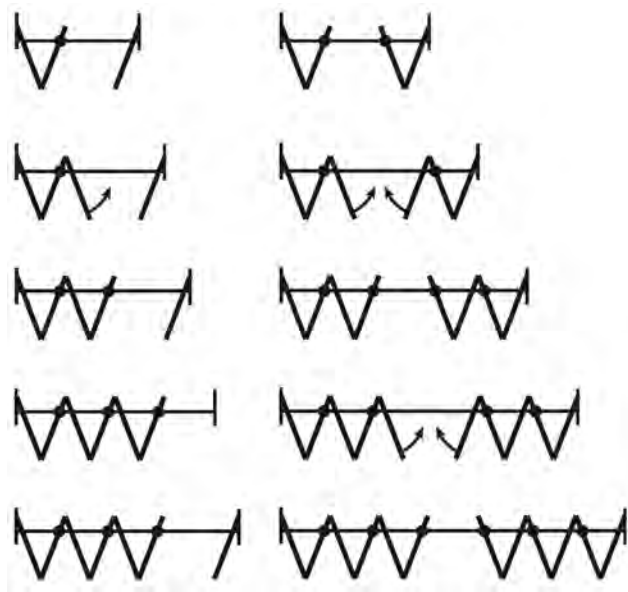
PK-30 system®

OPERABLE PARTITIONS

BI-FOLDING WALL



FLOOR GUIDE REQUIRED



EXAMPLES OF SOME OF THE POSSIBILITIES

BI-FOLDING WALL
PLAN CONFIGURATIONS

6.3

PK-30 system®

OPERABLE PARTITIONS

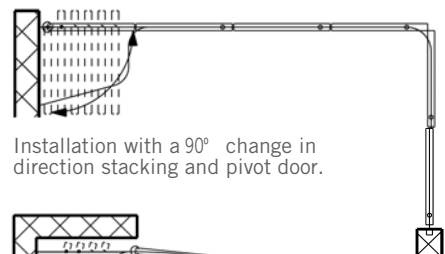
SLIDING/STACKING WALL



EXAMPLES OF SOME OF THE POSSIBILITIES



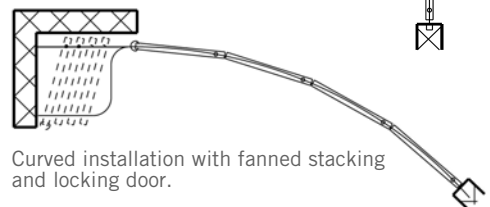
Straight installation with parallel stacking and pivot door.



Installation with a 90° change in direction stacking and pivot door.



Straight installation with parallel stacking and locking door.



Curved installation with fanned stacking and locking door.

SLIDING/STACKING WALL PLAN CONFIGURATIONS

6.4

PK-30 system®

OPERABLE PARTITIONS



PROJECT PHOTOS

6.5

PK-30 system®

OPERABLE PARTITIONS



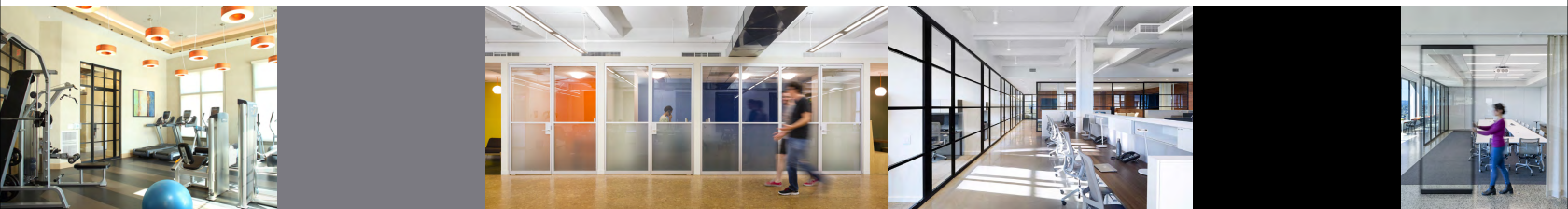
PROJECT PHOTOS

6.6

PK-30 system®

OPERABLE PARTITIONS

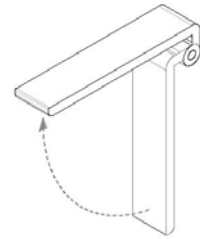
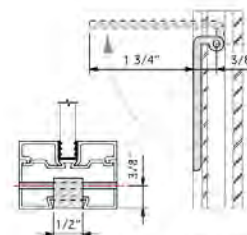
PK-30 system®



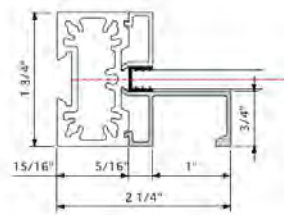
HARDWARE

HARDWARE

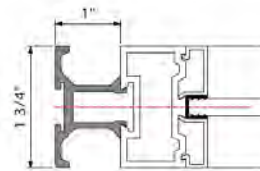
POCKET DOOR EDGE PULL
PK02-2010



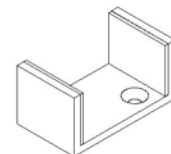
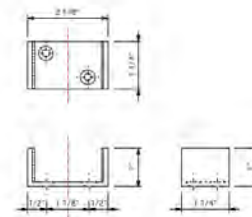
INTEGRAL FLUSH PULL
PK02-3010



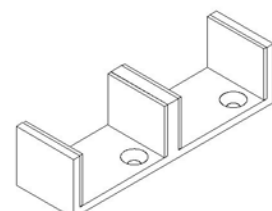
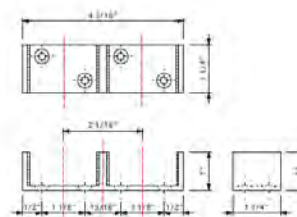
EXTERNAL FLUSH PULL
PK02-4010



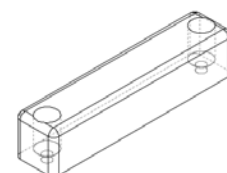
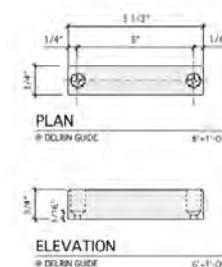
FIXED POINT GUIDE
PK03-1010



DOUBLE FIXED POINT GUIDE
PK03-1020



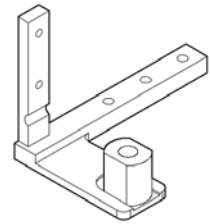
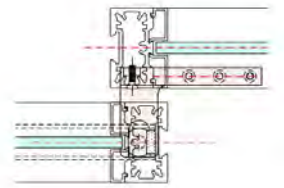
INTERNAL FIXED POINT GUIDE
PK03-2010



HARDWARE

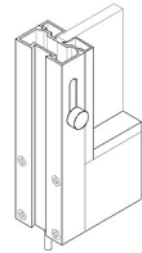
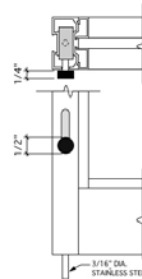
FOLLOWER MECHANISM

PK03-3010L (LEFT HAND) SHOWN
PK03-3010R (RIGHT HAND)



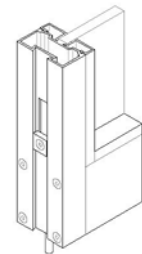
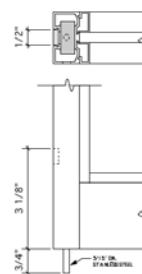
FLUSH BOLT

PK04-1010



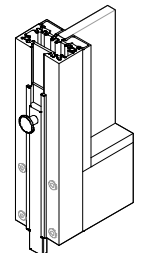
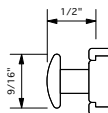
FLUSH BOLT

PK04-1020



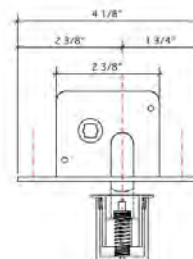
FLUSH BOLT

PK04-1030



BOTTOM RAIL LOCK

PK04-2010 [HAWA]



BOTTOM RAIL LOCK

PK04-3010K/K
(KEY x KEY)



HARDWARE

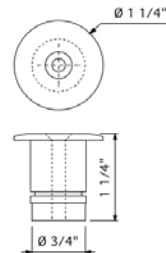
BOTTOM RAIL LOCK

PK04-3010K/T
(KEY x THUMBTURN)



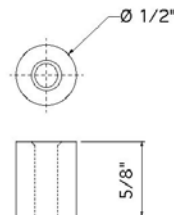
CARPET STRIKE

PK05-1010



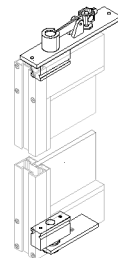
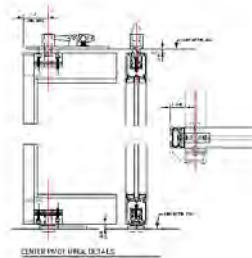
HARDWOOD STRIKE

PK05-1020



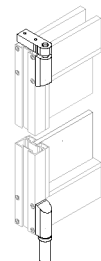
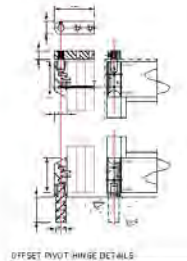
CENTER PIVOT HINGE

PK06-1010



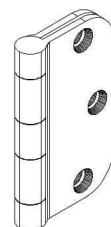
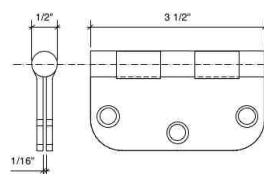
OFFSET PIVOT HINGE

PK06-2010

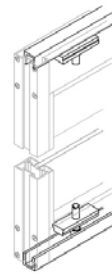
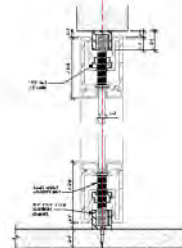
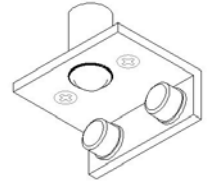
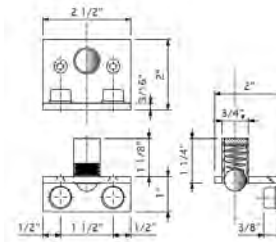
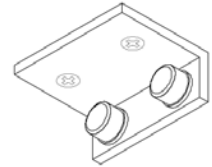
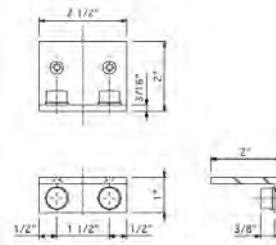


FOLDING WALL HINGE

PK06-3010



ANGLE STOP
PK07-1010



LEED SCORE CARD

**MRc4
Recycled Content
2 points**

PK-30 System Partitions have up to 30% recycled content, helping your project qualify for up to 2 points.

**MRc5
Regional Material
2 points**

All PK-30 System's Products are manufactured in Stone Ridge, NY and materials can be sourced regionally.

**MRc7
FSC Certified Wood
1 Point**

Upon request, FSC certified wood will be specified as panel material.

**IEQ 8.1 - 8.2
Daylight and Views
3 points**

PK-30 System's clear glass partitions significantly increase the amount of natural daylight that enters a site. They also facilitate added occupant views of exterior glazing.

**IEQ 9 (LEED for Schools)
Enhanced Acoustical
Performance
1 Point**

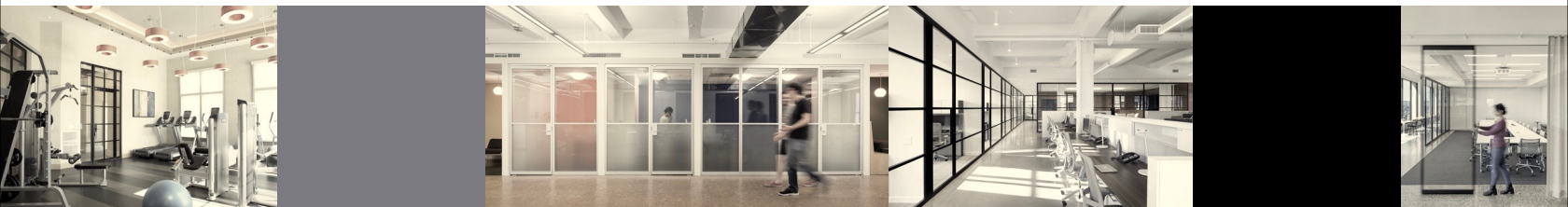
Upon customer request a partition can be designed to meet the required ANSI Standard S12.60-2002, Acoustical Performance Criteria, Design Requirements and Guidelines for Schools.



PK-30 System has committed to Environmental Stewardship by becoming a member of the USGBC and by designing its products to meet the strictest environmental standards, including LEED. Upon request PK-30 System will provide a manufacturer's letter certifying its compliance with the credits listed.



PK-30 system®



212.473.8050
www.pk30.com

8.1

CONTACT INFORMATION

EMAIL & PHONE

info@pk30system.com

t. 212.473.8050 / 845.687.9774 (factory)

f. 888.653.1394

SHIPPING ADDRESS

PK-30 SYSTEM
2452C LUCAS TURNPIKE
HIGH FALLS, NEW YORK 12440
t. 845.687.9774 (factory)

MAILING ADDRESS

PK-30 SYSTEM
P.O. BOX 656
STONE RIDGE, NY 12484

LINKS

FSB www.fsbusa.com - **LOCKS**

Lumicor www.lumicor.com - **ARCHITECTURAL RESIN PANELS**

3-form www.3-form.com - **TRANSLUCENT PANELS & MATERIAL SOLUTIONS**

PK-30 system® 



9.1

CONTACT INFORMATION



212.473.8050
www.pk30.com

10.1

PK-30 system®

PROJECT PHOTOS



212.473.8050
www.pk30.com

10.2

PK-30 system® ■■■

PROJECT PHOTOS

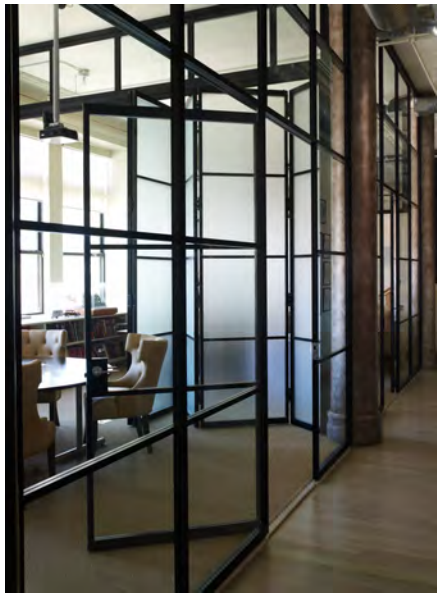


212.473.8050
www.pk30.com

10.3

PK-30 system®

PROJECT PHOTOS



212.473.8050
www.pk30.com

10.4

PK-30 system®

PROJECT PHOTOS



212.473.8050
www.pk30.com

10.5

PK-30 system®

PROJECT PHOTOS



212.473.8050
www.pk30.com

10.6

PK-30 system®

PROJECT PHOTOS



212.473.8050
www.pk30.com

10.7

PK-30 system®

PROJECT PHOTOS



212.473.8050
www.pk30.com

10.8

PK-30 system® ■■

PROJECT PHOTOS

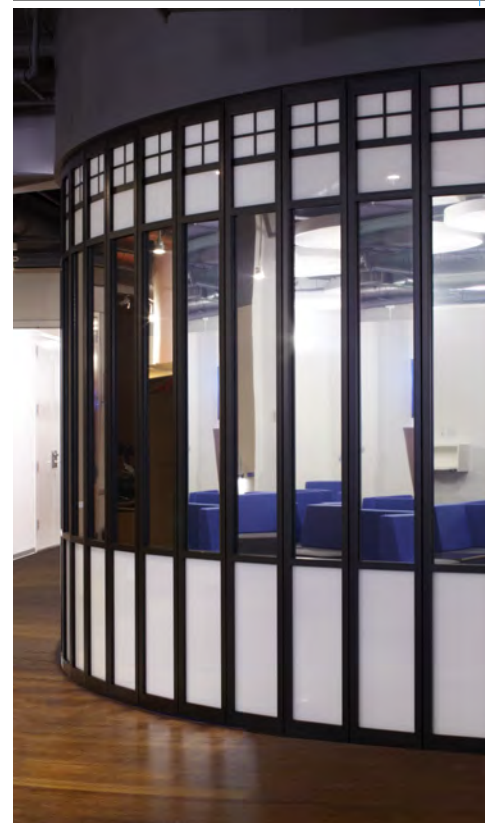


212.473.8050
www.pk30.com

10.9

PK-30 system®

PROJECT PHOTOS



212.473.8050
www.pk30.com

10.10

PK-30 system®

PROJECT PHOTOS



212.473.8050
www.pk30.com

10.11

PK-30 system®

PROJECT PHOTOS



212.473.8050
www.pk30.com

10.12

PK-30 system®

PROJECT PHOTOS



212.473.8050
www.pk30.com

10.13

PK-30 system®

PROJECT PHOTOS



212.473.8050
www.pk30.com

10.14

PK-30 system®

PROJECT PHOTOS



212.473.8050
www.pk30.com

10.15

PK-30 system® ■■

PROJECT PHOTOS



212.473.8050
www.pk30.com

10.16

PK-30 system® ■■■

PROJECT PHOTOS



212.473.8050
www.pk30.com

10.17

PK-30 system® ■■

PROJECT PHOTOS