

SAVANA – Brooklyn, New York

Location: Brooklyn, New York

Architect: Fogarty Finger Architecture | Interiors

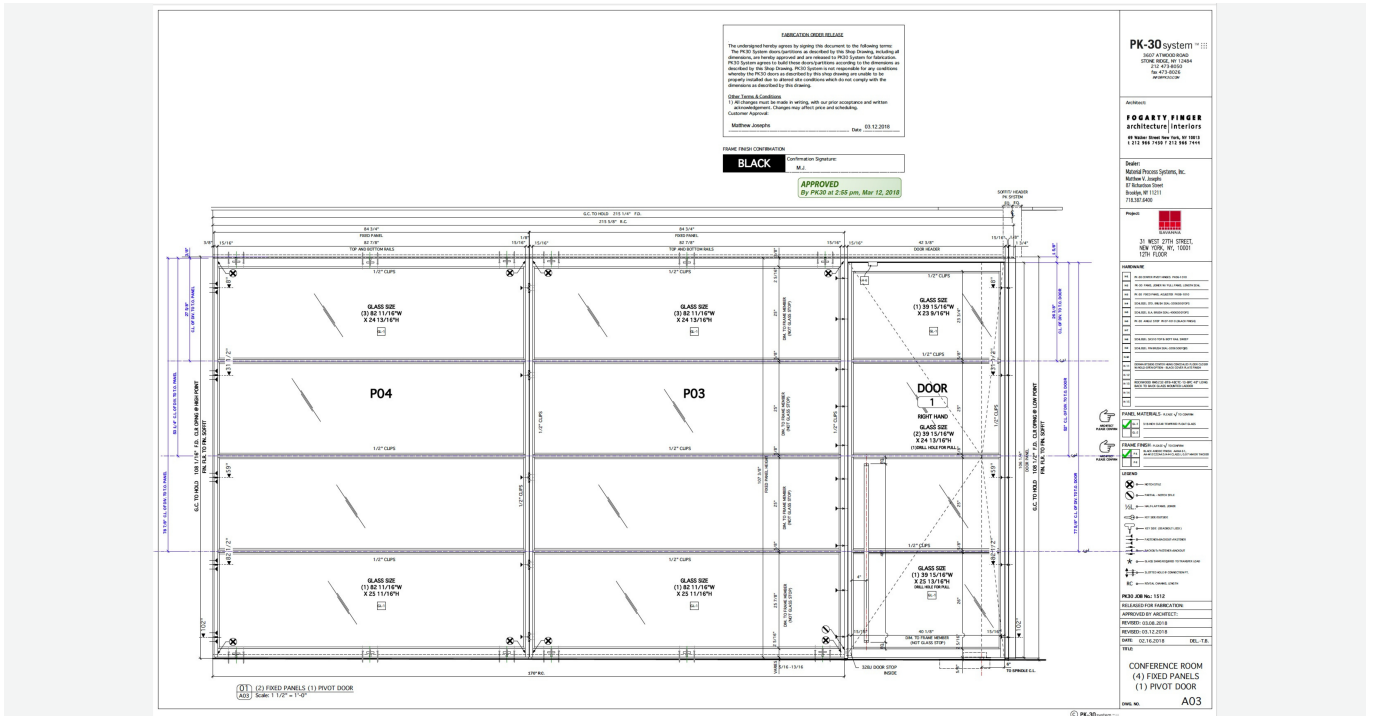
PK-30 Scope of Work: Panel System Type: Swing door with adjacent fixed glass panels

: Total Linear Footage: 31 linear feet

: Panel & Door Count: 1 single swing door + 4 fixed glass panels + 5 total panels/door units







<https://www.pk30system.com/wp-content/uploads/2026/02/website-video.mp4>

Project Overview

Transparency, Precision, and Refined Performance

Where clarity of design meets performance-driven detailing.

The SAVANA project, located in the heart of Brooklyn, is part of a thoughtfully designed commercial environment that reflects the evolving character of the

neighborhood—modern, refined, and intentionally transparent. Designed by Fogarty Finger Architecture | Interiors, the space balances openness with definition, creating interior moments that foster connection while maintaining acoustic and visual control.

[PK-30](#) was selected to deliver a glass wall and door solution that aligned seamlessly with the architectural vision, reinforcing transparency and precision while supporting the performance needs of a modern workplace.

Challenge

Within the **conference room**, the design team sought a clean, minimal enclosure that would preserve visual openness without sacrificing spatial separation. The solution required precise alignment, consistency in mullion detailing, and a refined material presence that complemented the surrounding architecture.

The challenge was to deliver a system that felt visually light yet structurally robust—one that integrated effortlessly into the space without drawing attention away from the architecture itself.

Solution

[PK-30](#) partnered closely with the design team to deliver a **swing door with adjacent fixed glass panels**, engineered to meet both aesthetic and functional goals.

The scope included:

- **Panel System Type:** Swing door with adjacent fixed glass panels
- **Total Linear Footage:** 31 linear feet
- **Panel & Door Count:**
 - 1 single [swing door](#)
 - 4 [fixed glass panels](#)
 - 5 total panels/door units
- **Location:** Conference Room 1205
- **Mullion Configuration:**

- Single [swing door](#) with **3 horizontal mullions**
- Four [fixed panels](#), each with **3 horizontal mullions per panel**

The **consistent mullion rhythm and custom dimensions** reinforce the project’s refined geometry, while the clarity of the glass promotes openness and connectivity throughout the space. The system was carefully adapted to align with the architectural intent, delivering a clean, cohesive installation that feels both intentional and understated.

Results

The SAVANA project exemplifies how thoughtful detailing and performance-driven systems elevate architectural interiors. PK-30’s ability to collaborate early, adapt systems to project-specific requirements, and execute with precision ensured the final installation aligned seamlessly with the design vision.

This project reflects [The PK-30 Experience](#)—a process defined by collaboration, customization, and reliability. By supporting the design team with technical insight and responsive coordination, PK-30 delivered a solution that enhances both form and function.

Conclusion — The PK-30 Experience

At SAVANA, [PK-30](#) provided more than a glass wall system—we delivered confidence in execution. **PK-30’s ability to assist the design team, customize our product, and deliver a solution that integrates seamlessly into the architecture contributed to the successful realization of this project.** Our commitment to quality, precision, and collaboration not only met but exceeded expectations, reinforcing the values at the core of SAVANA.

This is [The PK-30 Experience](#)—where transparency, precision, and refined performance come together to support exceptional design.

Tag: SAVANA – Brooklyn, New York