

Harvest Office, New York City, NY

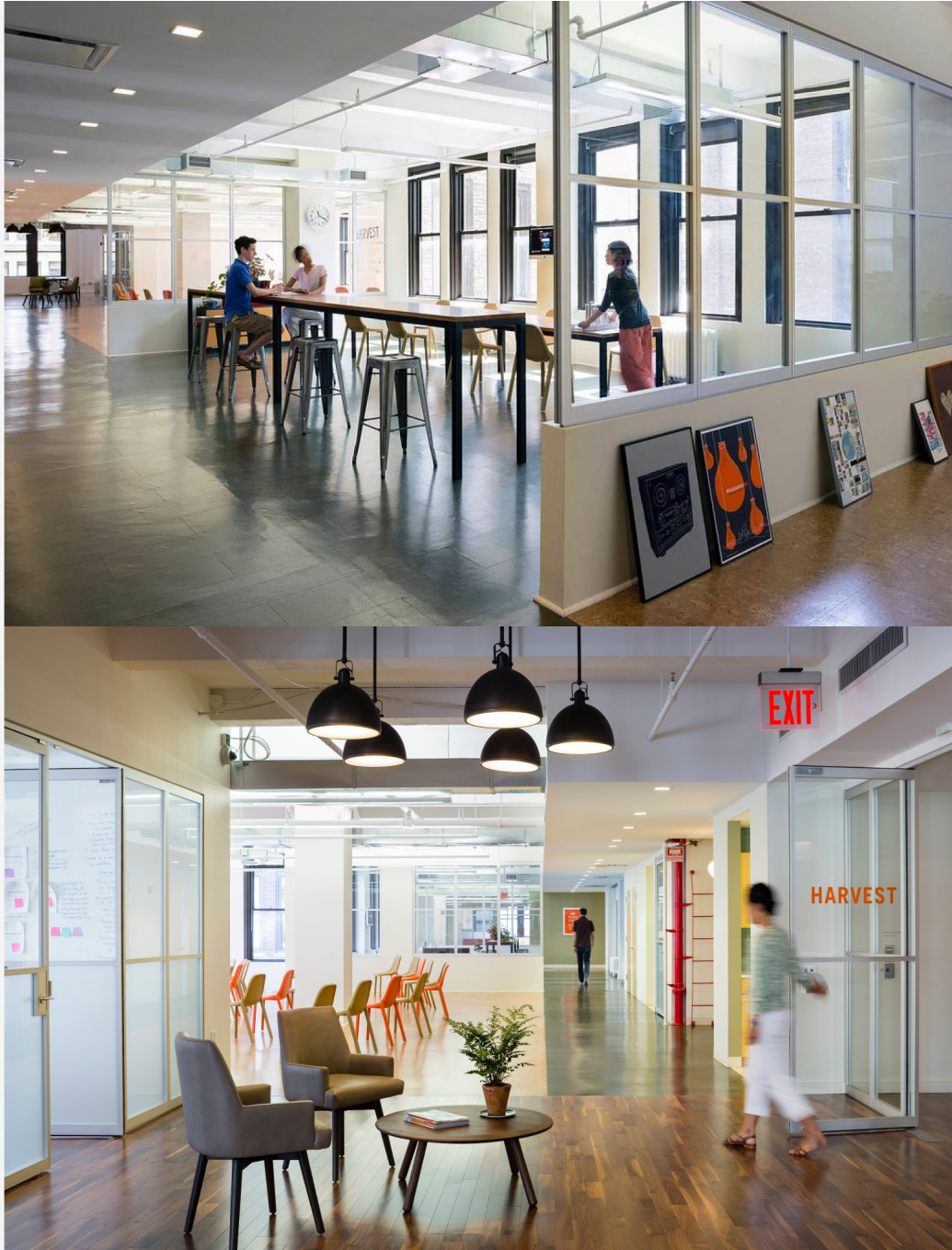
Location: New York City

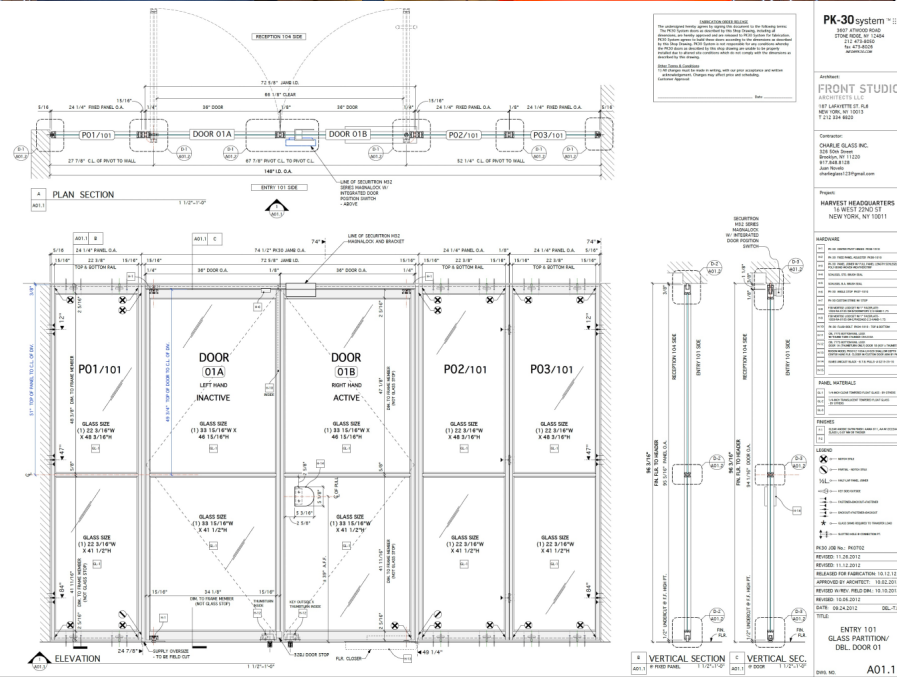
Architect: Front Studio Architects • New York, NY

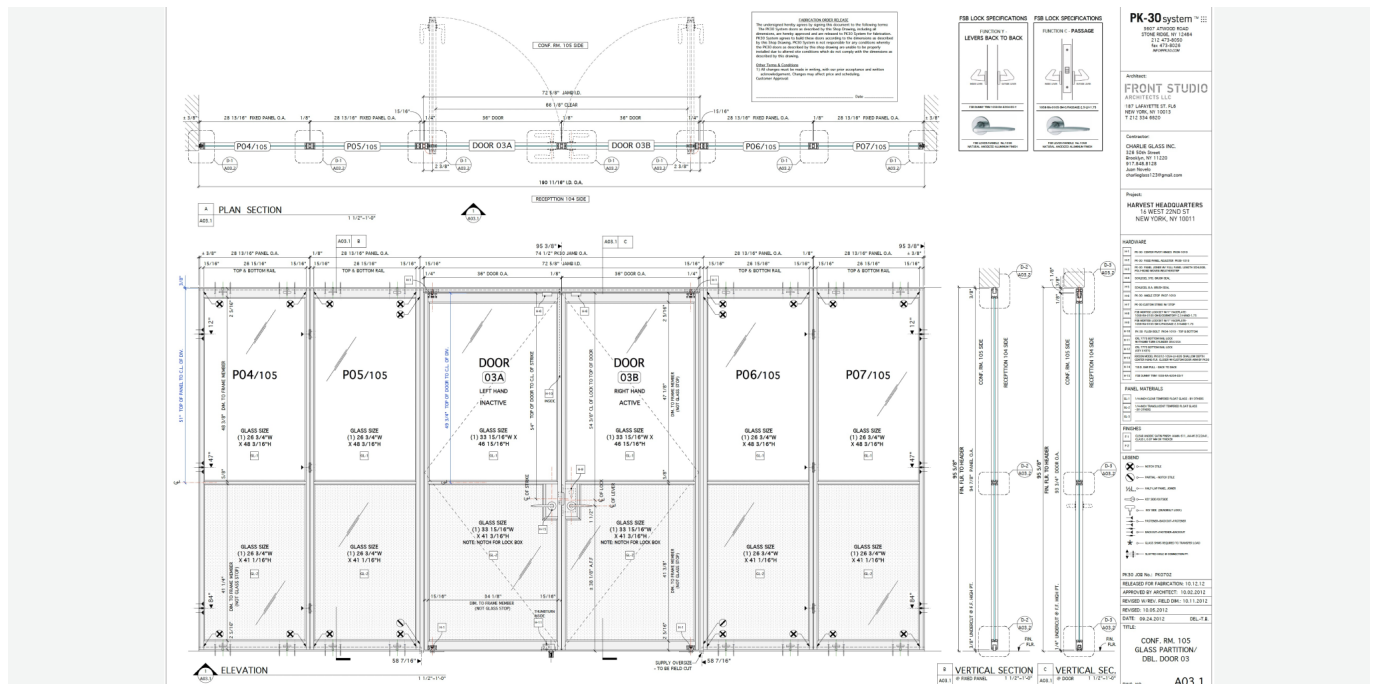
Scope: 158.6 Linear Feet (15) Swing doors + (41) Fixed Panels

Photograph: James Ewing/OTTO PK30









Harvest, a rapidly growing technology company, sought a workspace that prioritized light, transparency, and flexibility to foster collaboration and innovation. Located in New York City's Flatiron District, the 10,000 sq. ft. office renovation by Front Studio Architects was designed to maximize natural light, preserve open views, and create a versatile space suitable for various work configurations, events, and lectures. [PK30](#) played a critical role in achieving these objectives by installing 158.6 linear feet of [wall systems](#), including 15 [swing doors](#) and 41 [fixed panels](#).

Challenge

Harvest's design requirements emphasized maintaining openness and transparency throughout the space while addressing functional needs. The central spine of breakout rooms required partitions that balanced privacy with visual connectivity and the overall design needed to support flexible configurations for different uses without compromising the flow of light. Additionally, as the office housed a dining area to unite the team, the design had to seamlessly integrate diverse spatial functions.

Solutions

PK30 collaborated closely with Front Studio Architects to deliver a solution tailored to Harvest's needs. The [PK30 system](#) was chosen for its clean, minimalist aesthetic and unparalleled performance in achieving both transparency and acoustic comfort. Using PK30's sleek, durable [aluminum frames](#) and high-quality glass panels, the design preserved sightlines to the four exposures, visible from all four sides, while providing essential division in the central spine.

Results

The completed office met and exceeded Harvest's expectations. [The PK30 system](#) allowed for the seamless partitioning of spaces while maintaining visual connectivity and maximizing light transmission. This approach supported Harvest's desire for a modern, transparent environment that fosters collaboration and inspiration among employees.

Conclusion

The Harvest office exemplifies how PK30's system enhances architectural design by providing solutions that seamlessly integrate aesthetics and functionality. By fostering a bright, open, and adaptable workspace, PK30 helped create an environment where collaboration and innovation thrive.

Tag: Harvest Office Case Study