

Greenpoint Renaissance Center - Brooklyn, NY

Location: Brooklyn, NY

Architect: Nomad Architecture, NY

Scope: 48 Fixed Panels to define and partition the interior spaces

: 13 Swing Doors to create accessibility within the office areas

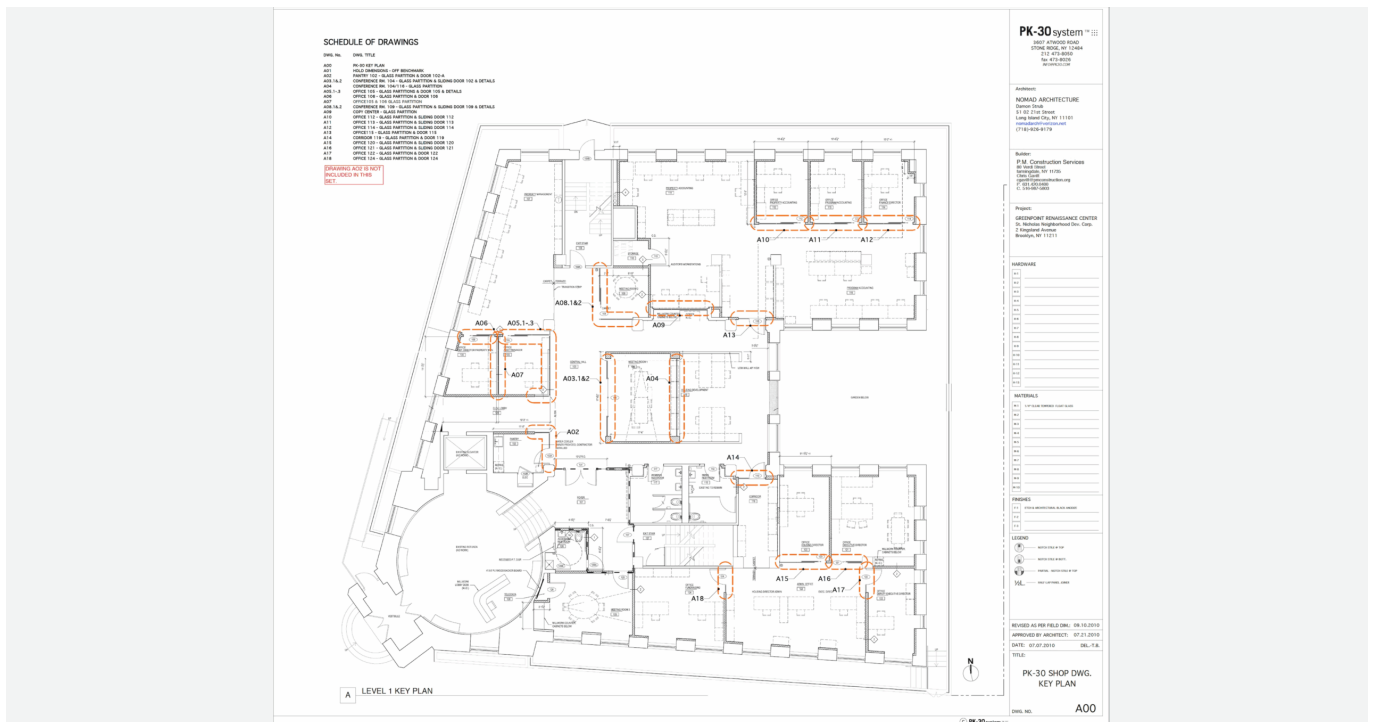
: 10 Sliding Doors to allow for flexible transitions between spaces











Project Summary

The Greenpoint Renaissance Center, a community-driven development initiative by the Greenpoint Renaissance Enterprise Corporation (GREC), transformed a key site in Brooklyn, New York, into a modern, functional space. Located in the heart of Greenpoint, **the project aimed to provide a venue for community and business functions, while reflecting the organization’s values of openness, simplicity, and transparency.** [PK-30 System](#) was selected to provide a tailored solution for [fixed panels](#), [swing doors](#), and [sliding doors](#), contributing to the center’s aesthetic vision.

The scope of work included: (for a total of 211 linear feet)

- 48 [Fixed Panels](#) to define and partition the interior spaces
- 13 [Swing Doors](#) to create accessibility within the office areas
- 10 [Sliding Doors](#) to allow for flexible transitions between spaces

The Challenge

The primary challenge of the Greenpoint Renaissance Center project was to design an interior that balanced the **need for functionality with a striking, modern aesthetic**. The design had to convey transparency and openness, reflecting the values of GREC, while maintaining **a serene, clean aesthetic in the interior spaces**. The design vision called for a combination of wood, glass, metal, and stone—materials that could create a peaceful, uncluttered environment while offering functionality.

The space needed to strike a balance between privacy and openness, with clear visibility and flow between rooms. The doors and panels needed to be **visually cohesive, simple to operate**, and seamlessly integrate into the building's modern design.

The Solution

PK-30's solution for the Greenpoint Renaissance Center was driven by a focus on clean lines, simplicity, and transparency. Our fixed panels, swing doors, and sliding doors were designed to support the **peaceful aesthetic** envisioned by the design team.

The use of glass allowed natural light to flow freely between spaces, enhancing the openness of the design. Our wood and metal elements were chosen to complement the stone floors, creating a serene and grounded aesthetic. The doors were designed to integrate smoothly with the wood and glass, creating an uninterrupted flow of space that reflects the transparency and honesty of GREC's mission.

PK-30's approach ensured that the materials and finishes used in the project aligned with the **clean, modern, and straightforward aesthetic that was a key part of the design intent**. The result was a space that balanced openness with privacy, and a layout that was simple and highly functional, allowing the Greenpoint Renaissance Center to fulfill its role as a community hub while maintaining a calm, transparent environment.

The Results

The Greenpoint Renaissance Center now stands as **a modern, tranquil space that embodies the values of transparency and simplicity**. The integration of PK30's fixed panels, swing doors, and sliding doors into the design allowed for clear lines of sight and smooth transitions between rooms, while maintaining privacy where needed. The use of wood, glass, and metal finishes not only created an aesthetic that was clean and simple but also highlighted the transparency that is central to GREC's mission.

The finished space provides an environment that is peaceful, modern, and functional, and the materials used—wood, glass, and metal—create **a balanced and harmonious feel throughout the interior**. The project was completed on time and within budget, thanks to the precision of PK30's prefabricated components that ensured a smooth installation process.

[Why PK-30?](#)

PK-30 System was chosen for its ability to provide a high-quality, customizable wall system that fits the aesthetic vision of the Greenpoint Renaissance Center. Our system's clean lines, modern design, and use of materials that emphasize transparency and simplicity perfectly align with the project's goals. PK30's reputation for easy installation and flawless performance was key to the successful execution of this project.

Conclusion

The Greenpoint Renaissance Center is **a perfect example of how PK-30's [fixed panels](#), [swing doors](#), and [sliding doors](#) can help create a peaceful, modern, and transparent space**. The use of wood, glass, and metal in combination with the stone floors achieved the design intent of simplicity, openness, and modernity. The ease of installation, flawless performance, and simple operation of our products support the vision of a collaborative, flexible, and efficient work environment, ensuring long-term success.

PK-30's ability to assist the design team, customize our product, and deliver a solution that integrates seamlessly into the architecture contributed to the successful realization of this project. Our commitment to quality and reliability not only met but exceeded expectations, allowing the Greenpoint Renaissance Center to maintain a high-performing, serene space that reflects the core values of GREC.

Tag: Greenpoint Renaissance Center