

Addison & Clark, Chicago, IL

Location: Chicago, IL

Architect: SCB and Gary Lee Partners

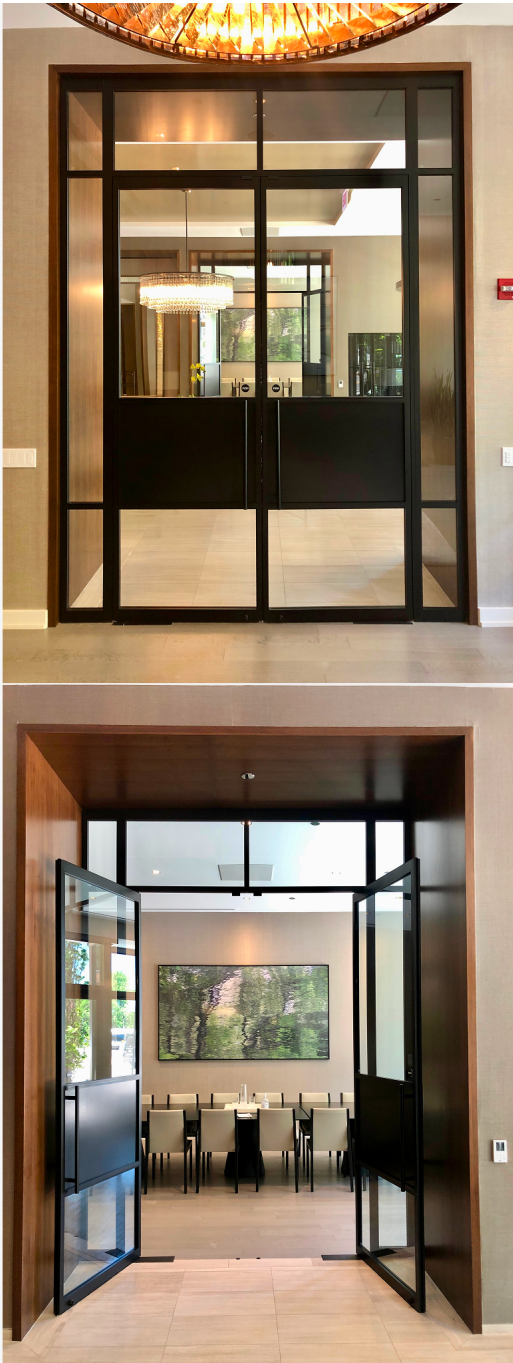
Scope: 9 Custom Swing Doors, 10 Fixed Panels

Custom Solution: Custom Metal Infill Panels Enhance Functionality, Privacy, and Visual Harmony

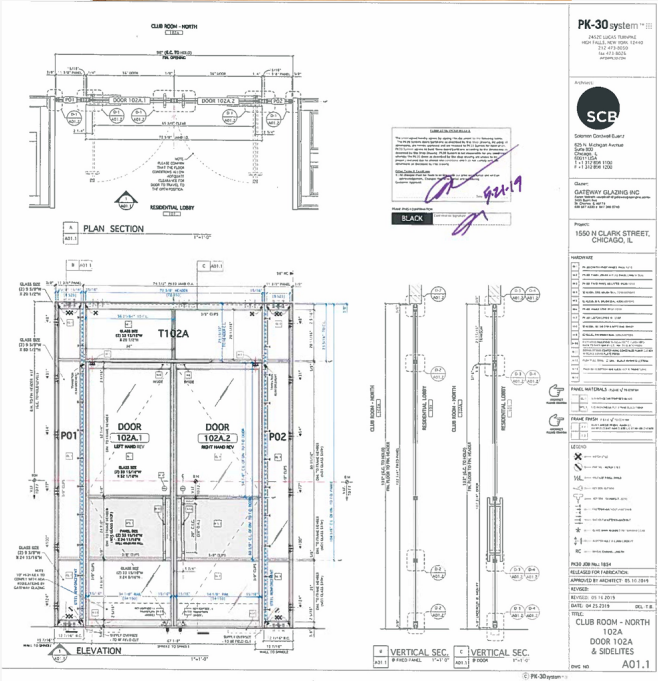


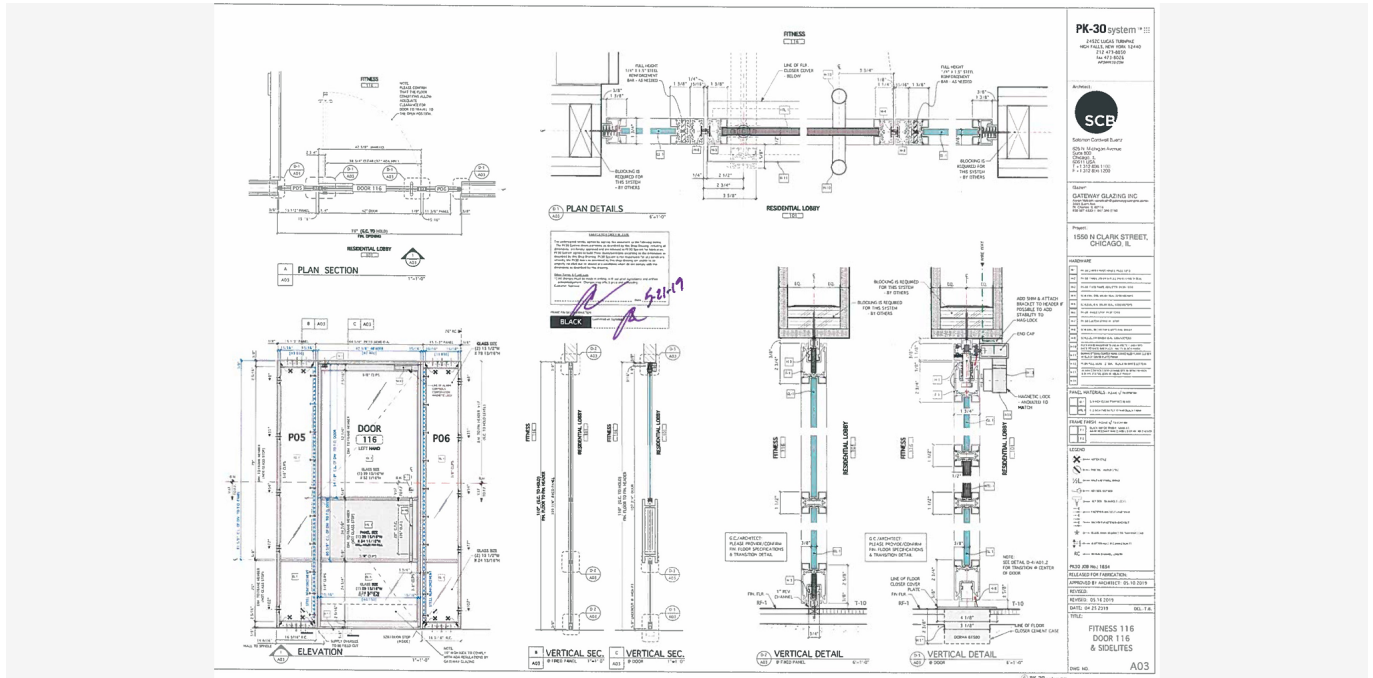












The Residences at Addison & Clark bring luxury living to the vibrant Wrigleyville neighborhood, right across from historic Wrigley Field. Designed by SCB and Gary Lee Partners, the project integrates residential, retail, and entertainment spaces into a bustling, year-round community. Featuring 148 rental units, the development blends modern architecture with the rich character of Chicago's beloved sports district. [PK30 System](#) played a key role by delivering customized glass partition solutions that enhance the project's upscale, dynamic atmosphere.

Challenge

The Residences at Addison & Clark faced unique design challenges, including:

- Creating high-end, visually striking partitions that fit a sophisticated urban residential environment.
- Incorporating custom swing doors with truly divided light mullions and concealed hardware for a clean, elegant look.

- Meeting LEED Silver certification standards.
- Coordinating tight construction schedules while maintaining top-tier quality.

Solutions

[PK30 System](#) collaborated closely with SCB and Gary Lee Partners from the early design stages to ensure every detail matched the project's vision. Our contributions included:

- 9 custom [swing doors](#) and 10 [fixed panels](#) featuring truly divided light mullions.
- Matte black finishes and Omega-Ply Kynar panels to create a timeless, refined aesthetic.
- Custom-designed doors with concealed center-hung floor closers and top pivots with angle stops for seamless functionality.
- Detailed shop drawings and technical support for precise fabrication and smooth installation.

Custom Solution

To support the project's refined design vision, PK-30 created a custom solution for the center section of the double swing doors. The design team envisioned a metal panel to be placed between the two center mullions—an element that would do more than meet aesthetic goals. These metal infill panels were engineered and finished to match the PK-30 system, providing visual continuity while enhancing functionality.

Serving as both a structural and design element, the panels reinforced the door assemblies to support bar pulls, ensuring long-term durability and user comfort. At the

same time, the panels introduced a sense of privacy and visual weight to the glazed openings, striking a deliberate balance between glass, metal, and frame. This careful interplay helped anchor the doors visually and maintain architectural harmony within the space.

Leveraging our advanced in-house tooling and fabrication capabilities, PK-30 was able to precisely engineer and finish each panel to exact tolerances, ensuring seamless integration with the door profiles. Our commitment to craftsmanship and technical excellence ensured the final product not only delivered on the architect's design intent, but also elevated the user experience through enhanced functionality and aesthetic balance. This level of detail exemplifies PK30's role as more than a manufacturer—we're a collaborative partner dedicated to translating vision into reality.

Results

The [PK30](#) installation delivered:

- A cohesive, luxurious aesthetic that enhances both public and private spaces.
- Exceptional durability suited for active urban living.
- Sophisticated interiors that maintain openness, natural light, and architectural clarity.
- A defining entrance experience, setting the tone for luxury living in Wrigleyville.

Conclusion

The Residences at Addison & Clark showcase [PK30 System's](#) dedication to custom architectural solutions that elevate urban spaces. From design consultation to installation, our team worked hand-in-hand with the architects to deliver precision,

beauty, and performance. This project stands as a model for integrating modern luxury into vibrant, historic neighborhoods.

Tag: Addison & Clark, Chicago, IL