

## 1875 K Street NW

**Location:** Washington, DC

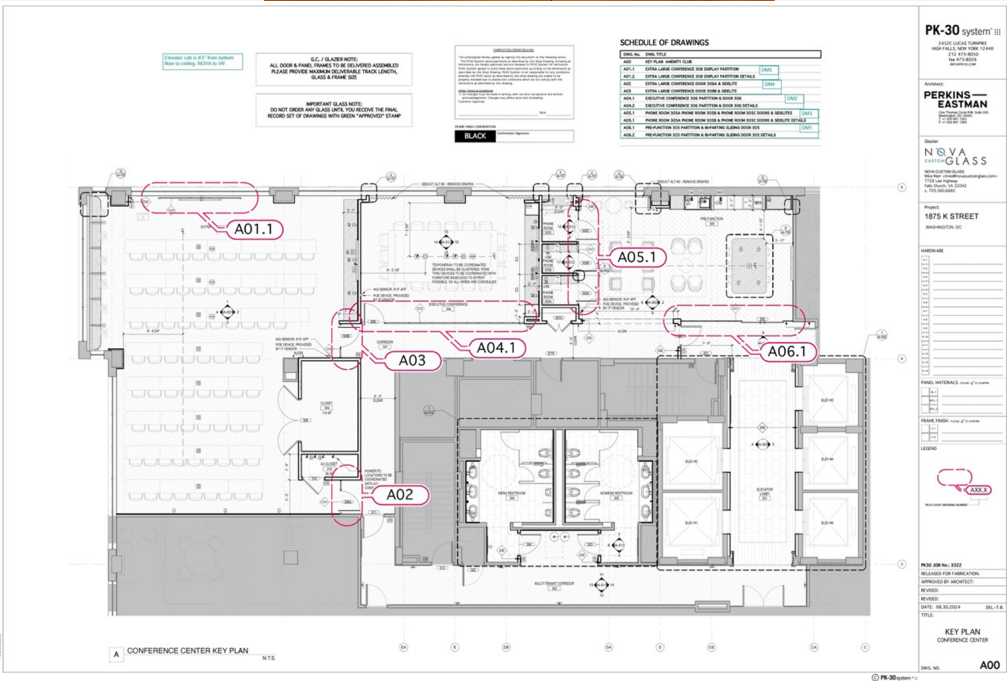
**Architect:** Perkins Eastman, DC & Forrest Perkins, DC

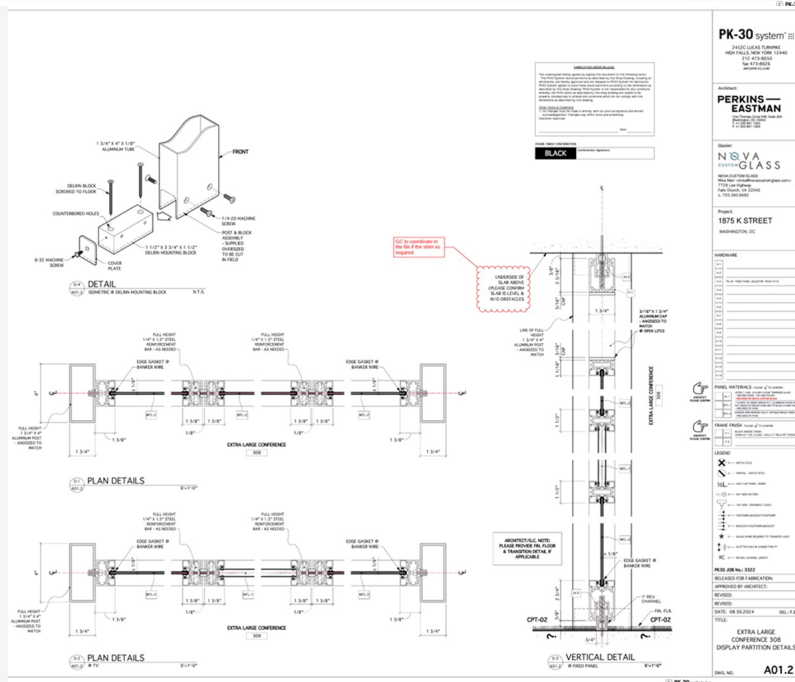
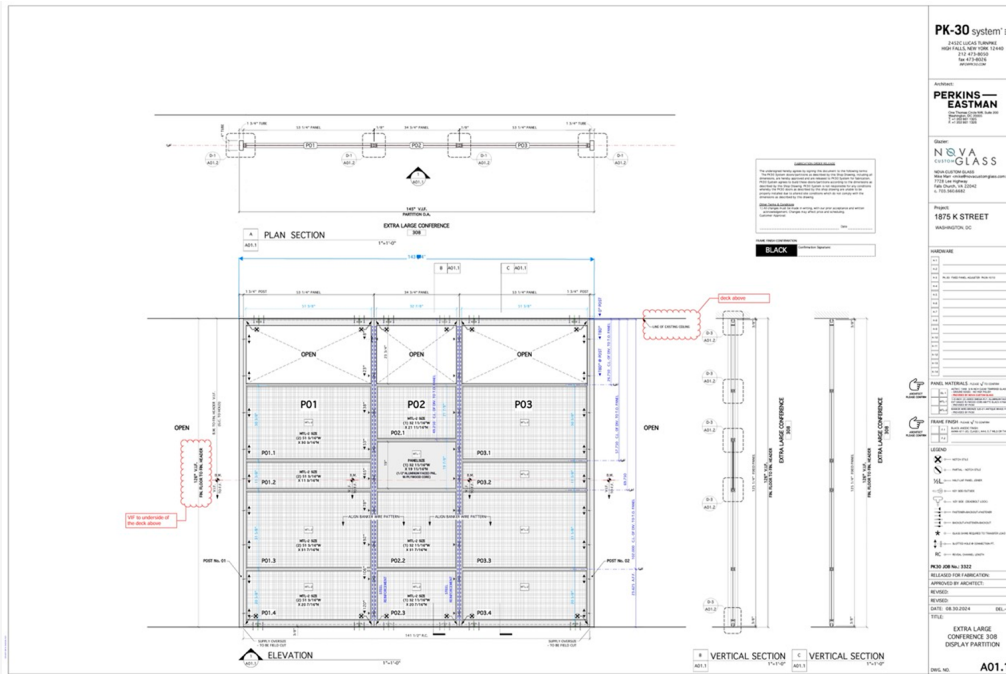
**Scope:** PROJECT TOTAL: (76.2) L.F. (6) SWING DOORS + (2) SLIDING DOORS + (18) FIXED PANELS

**Custom solution:** Custom Wire Mesh Integration with PK-30 System

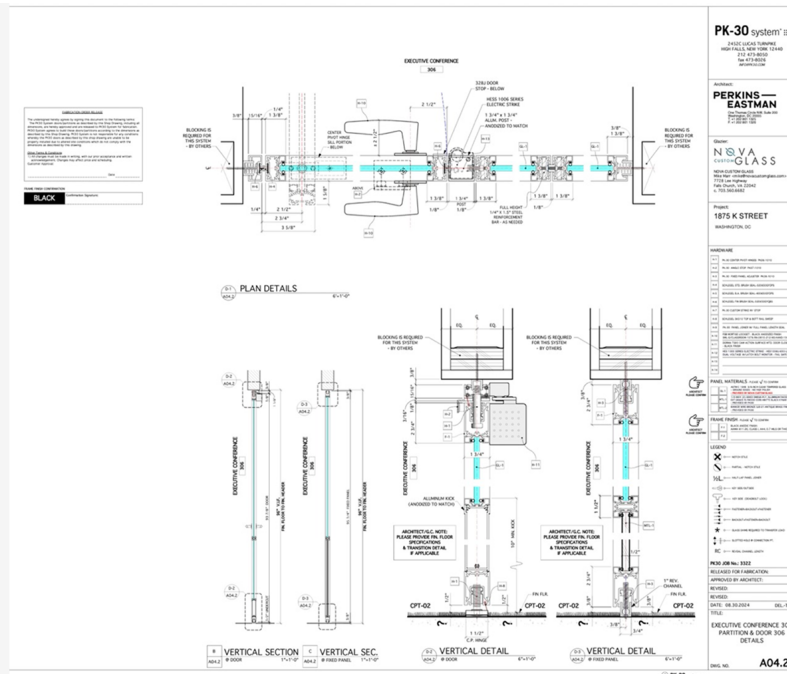












## Project overview

Located in the heart of Washington, D.C.'s Central Business District, 1875 K Street NW is a 12-story, 190,000-square-foot Class A office building undergoing a comprehensive

repositioning. Led by Carr Properties, in collaboration with architectural firms Perkins Eastman and its hospitality design studio ForrestPerkins, the project aims to transform the building into a “Premium Plus” asset by integrating hospitality-driven design elements.

### **Challenge**

A central design feature of the repositioning involved incorporating decorative wire mesh panels into the [PK-30](#) System’s demountable wall system. This presented several technical challenges:

- Assisting architects in selecting suitable wire mesh that aligns with the design vision.
- Designing a custom frame around the wire mesh panels compatible with [PK-30](#)’s clip system, accommodating panels between ¼” and ½” thickness.
- Determining the appropriate size and structural integrity of the wire mesh, including point load and strength performance.
- Coordinating with the wire mesh supplier on material type, quality, and finish.
- Managing the production and approval process for samples in collaboration with the design team and wire mesh provider.

### **Custom Solution**

[PK-30 System](#) collaborated closely with the design team to develop a custom architectural solution that integrated decorative wire mesh panels into our demountable [wall system](#). Our team guided the architects through the process of selecting the appropriate type, size, and finish of the wire mesh, ensuring both aesthetic appeal and structural performance. We engineered a custom frame to accept and secure the mesh within the [PK-30](#) clip system, which accommodates panel thicknesses ranging from ¼” to ½”.

To ensure durability and performance, we evaluated the wire mesh’s point load capacity and structural integrity. We also coordinated extensively with the wire mesh fabricator and project stakeholders to manage sample production and secure design

approvals. In addition to the decorative role, our technical team developed a support system within the mesh panels to accommodate a large wall-mounted monitor in the building's main event space, ensuring functionality without compromising the refined, hospitality-focused aesthetic.

This successful customization demonstrates [PK-30](#) System's ability to provide integrated solutions that bridge form and function, aligning seamlessly with the project's overall vision.

#### **Why PK-30 System**

PK-30 System's ability to provide [customized solutions](#) and collaborate effectively with various stakeholders made it an ideal partner for this project. Their expertise ensured that the integration of decorative wire mesh panels met both design aspirations and technical requirements.

#### **Project Highlights**

- Total installation: 76.2 linear feet, including six [swing doors](#), two [sliding doors](#), and 18 [fixed panels](#).
- Custom integration of decorative wire mesh panels within the [PK-30 System](#).
- Seamless collaboration with architects, designers, suppliers, and project managers to achieve the desired design intent.

#### **Conclusion**

The successful integration of custom wire mesh panels into the [PK-30 System](#) at 1875 K Street NW exemplifies PK-30's commitment to innovation and collaboration. Their ability to navigate complex design challenges and deliver tailored solutions contributed significantly to the project's goal of creating a hospitality-inspired, premium office environment.

**Tag:** 1875 K Street NW